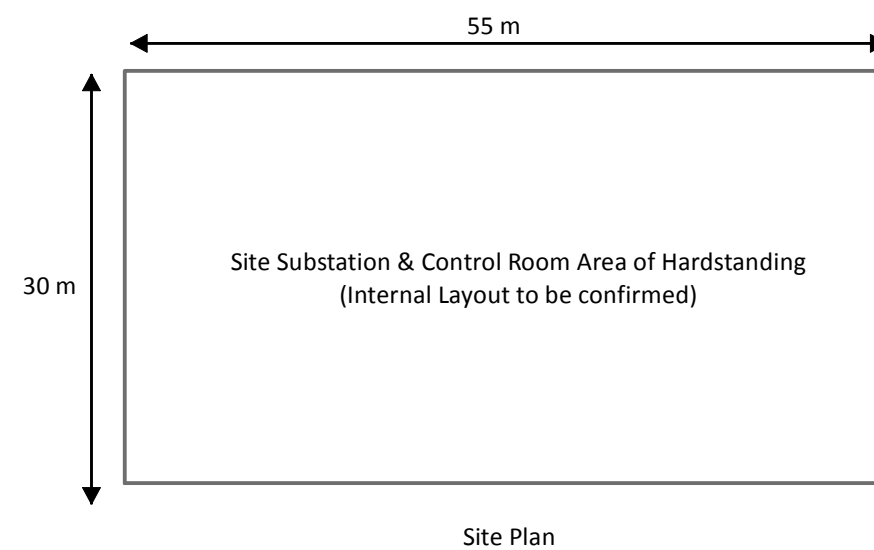
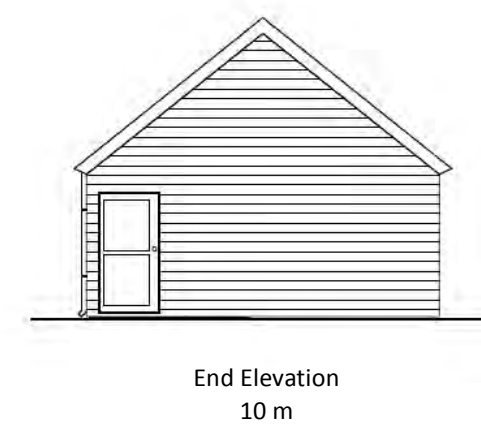
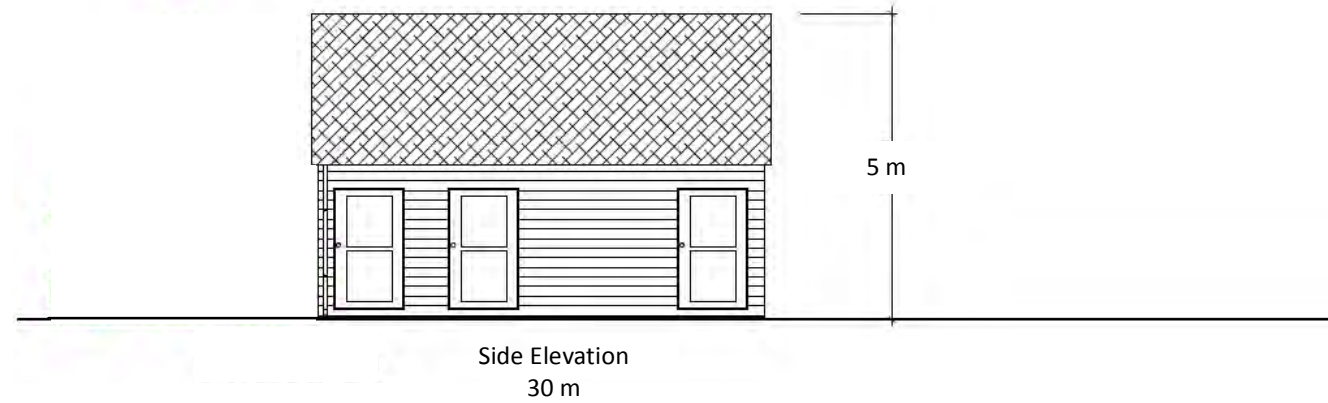
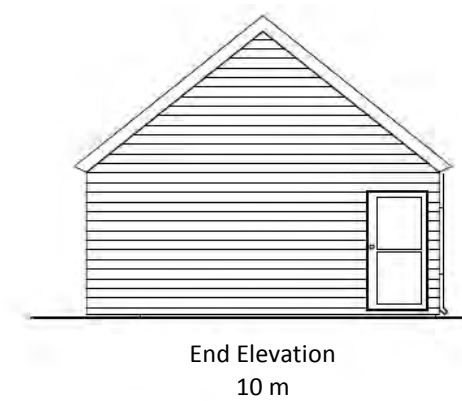
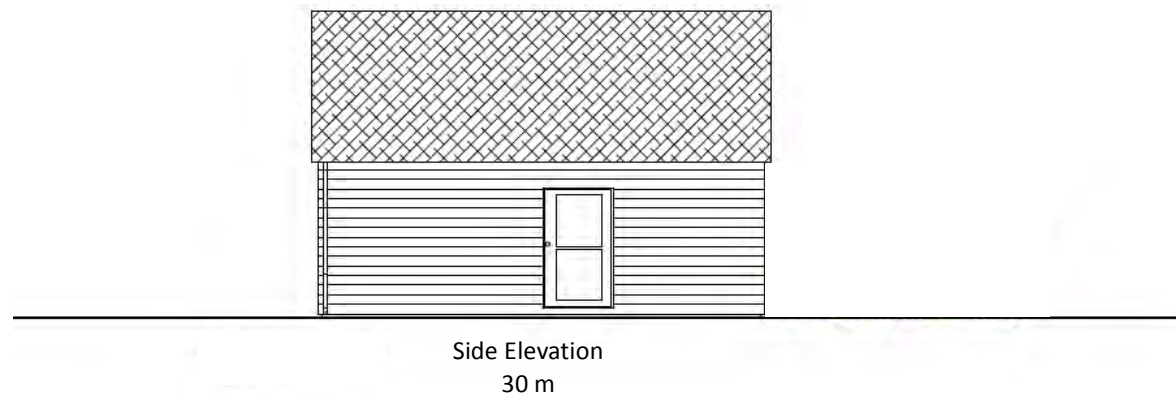


Note:
Position of doors, gates and internal walls are indicative only.

Local building materials and finishes are proposed.

Water disposal to be in accordance with relevant agency requirements and in accordance with building regulations.

Do not scale this drawing.



Douglas West Wind Farm
Amendments to Consented Development

Environmental Statement

Figure 3.10

Typical Substation & Control Room Elevation