

Appendix 9.2 – Photographs of Background Noise Survey Locations

Contents

Introduction	1
Figure 1 – Location N1 Westerhouse	1
Figure 2 – Location N2 Station House	3
Figure 3 – Location N3 6 Middlemuir Road	4

This page is intentionally blank.

Appendix 9.2: Photographs of Background Noise Survey Locations

Introduction

The noise measurement locations used during the two background assessment campaigns in July 2012 and April 2015 are shown in the photographs.

Figure 1 – Location N1 Westerhouse



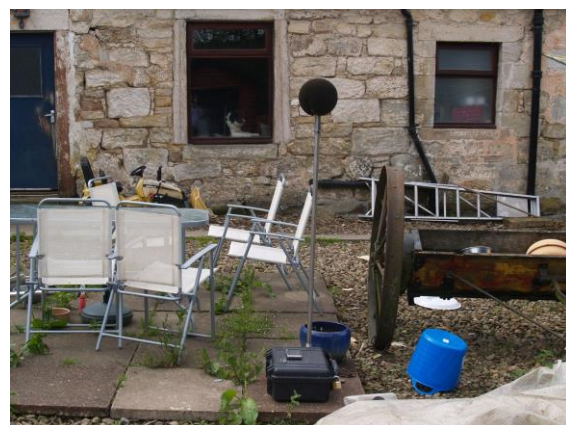
Looking north (2012)



Looking south (2012)



Looking east (2012)



Looking west (2012)



Looking north (2015)



Looking south (2015)



Looking east (2015)



Looking west (2015)

**Figure 2 – Location N2
Station House**



Looking north



Looking south



Looking east



Looking west

Figure 3 – Location N3
6 Middlemuir Road



Looking north



Looking south