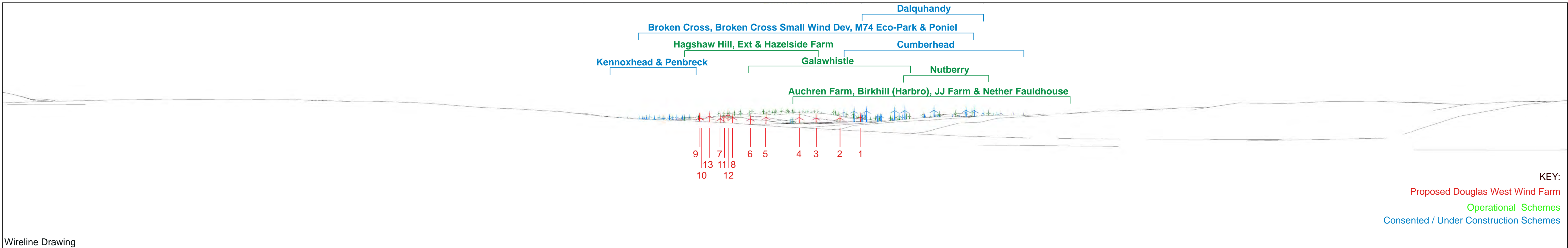




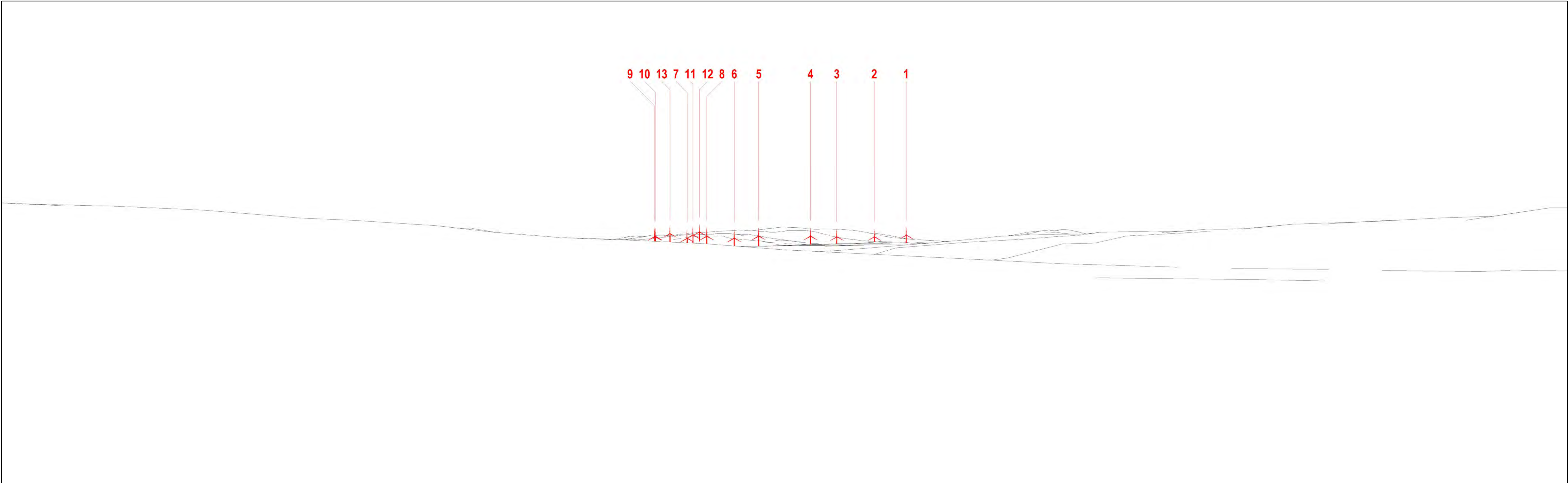
Baseline Photograph (Centred on site)

This image provides landscape and visual context only



Wireline Drawing

KEY:
 Proposed Douglas West Wind Farm
 Operational Schemes
 Consented / Under Construction Schemes

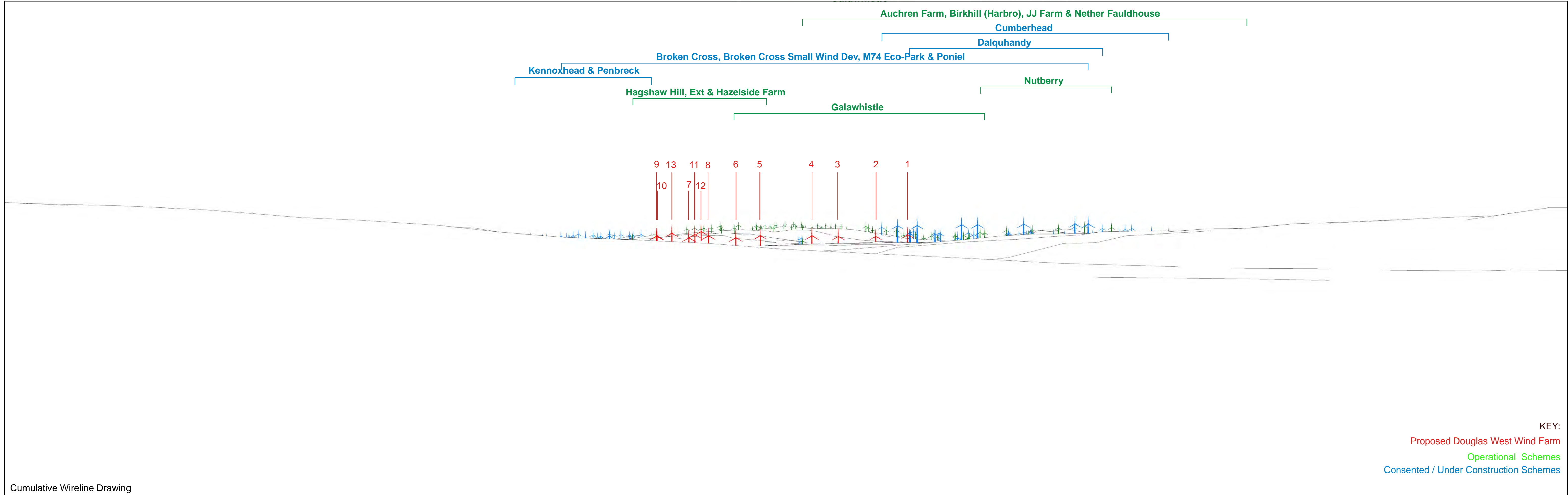


Wireline Drawing of Proposed Scheme



Photomontage of Proposed Scheme

View flat at a comfortable arm's length. If viewing this image on a screen, enlarge to full screen height



Cumulative Wireline Drawing

KEY:

- Proposed Douglas West Wind Farm
- Operational Schemes
- Consented / Under Construction Schemes



Viewpoint Information
 OS Reference: E 291447 N 641479
 Ground level: 178m (AOD)

Distance to nearest turbine: 12495m (T7)
 Bearing to centre of wireline: 228.86°

Angle of view: 53.5 degrees (planar projection)
 Principal distance: 812.5mm
 Paper size: 841 x 297 mm (half A1)
 Correct printed image size: 820 x 260mm

Camera: Nikon D600
 Lens: 50mm Fixed Focal Lens
 Height: 1.5m
 Date & Time: 25.03.2015-11.07