

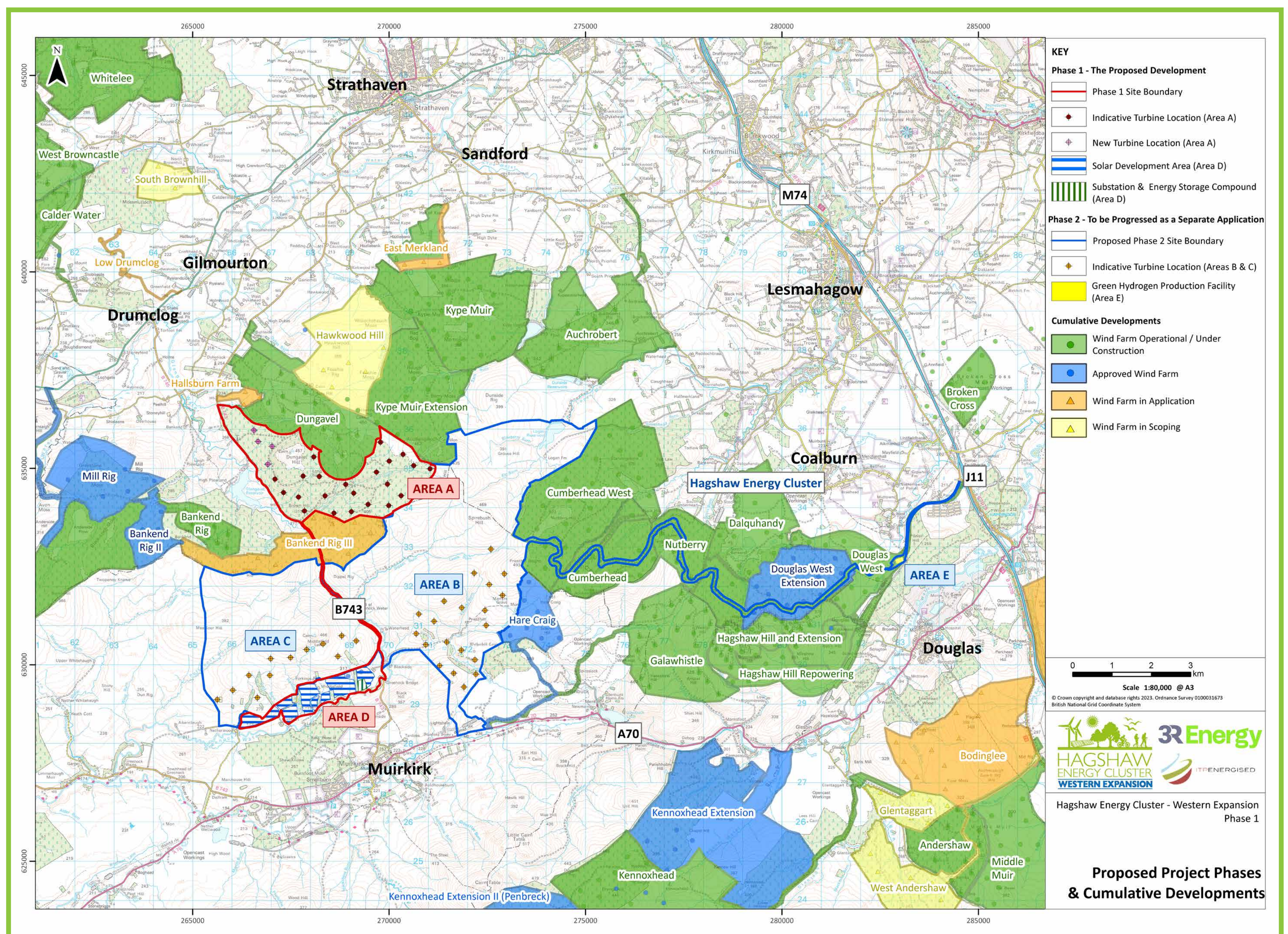
Hagshaw Energy Cluster Western Expansion | Phase 1

Phased Approach to the Project

3R Energy, on behalf of Spirebush Ltd, submitted a Scoping Report to the Scottish Ministers in September 2022 to seek early consultation for a mixed renewable energy development on land to the west of the existing Hagshaw Energy Cluster in South Lanarkshire/East Ayrshire.

A formal Scoping Opinion was received from the Scottish Ministers in March 2023. In response to comments made by statutory consultees as part of that Scoping Opinion, we have taken the decision to phase the previously consulted development as follows.

Proposed Project Phases in the Context of the Hagshaw Energy Cluster and Wider Wind Developments



Phase 1

Phase 1 will comprise the wind turbines within Area A and the solar, Battery and Energy Storage System (BESS) and substation within Area D **only**, which are all now outwith the SPA and SSSI. The site boundary for Phase 1 will include a stretch of the existing B743 public highway to allow cables to be laid in the road verge to connect the turbines in Area A to the substation in Area D. The proposed new site boundary for Phase 1 is shown outlined in red on the above plan. Hagshaw Energy Cluster- Western Expansion | Phase 1 will form the subject of a standalone Section 36 application to be submitted to the Scottish Ministers later in 2024. More details of the proposed Phase 1 development are provided on the next board.

Phase 2

In parallel with progressing the application for Phase 1, discussions with stakeholders will continue on the proposal to bring forward a separate application for the remaining components of the Hagshaw Energy Cluster- Western Expansion project outlined in blue on the above figure ('Phase 2'). The application for Phase 2 of the development is currently proposed to comprise turbines within Areas B and C, and the green hydrogen in Area E. Phase 2 also has the potential to include a separate BESS and substation compound within Area B adjoining the A70 east of Muirkirk, outwith the SPA/SSSI.

It is currently proposed that an application for Phase 2 would be submitted once the potential impacts on, and benefits to, the SPA and SSSI are further considered by all stakeholders in the context of the requirements of the national and international nature conservation regulations.



Picture looking west through Douglas West Wind Farm within Hagshaw Energy Cluster

3R Energy

Hidden Area