

Hagshaw Energy Cluster Western Expansion | Phase 1

Environmental Impact Assessment Report (continued)

Cultural heritage -

Will assess the effects of the development on the integrity and setting of historic sites within the development and in the surrounding area.

Forestry -

Will assess the effects of the development arising from tree removal to facilitate wind farm infrastructure within the northern development area.

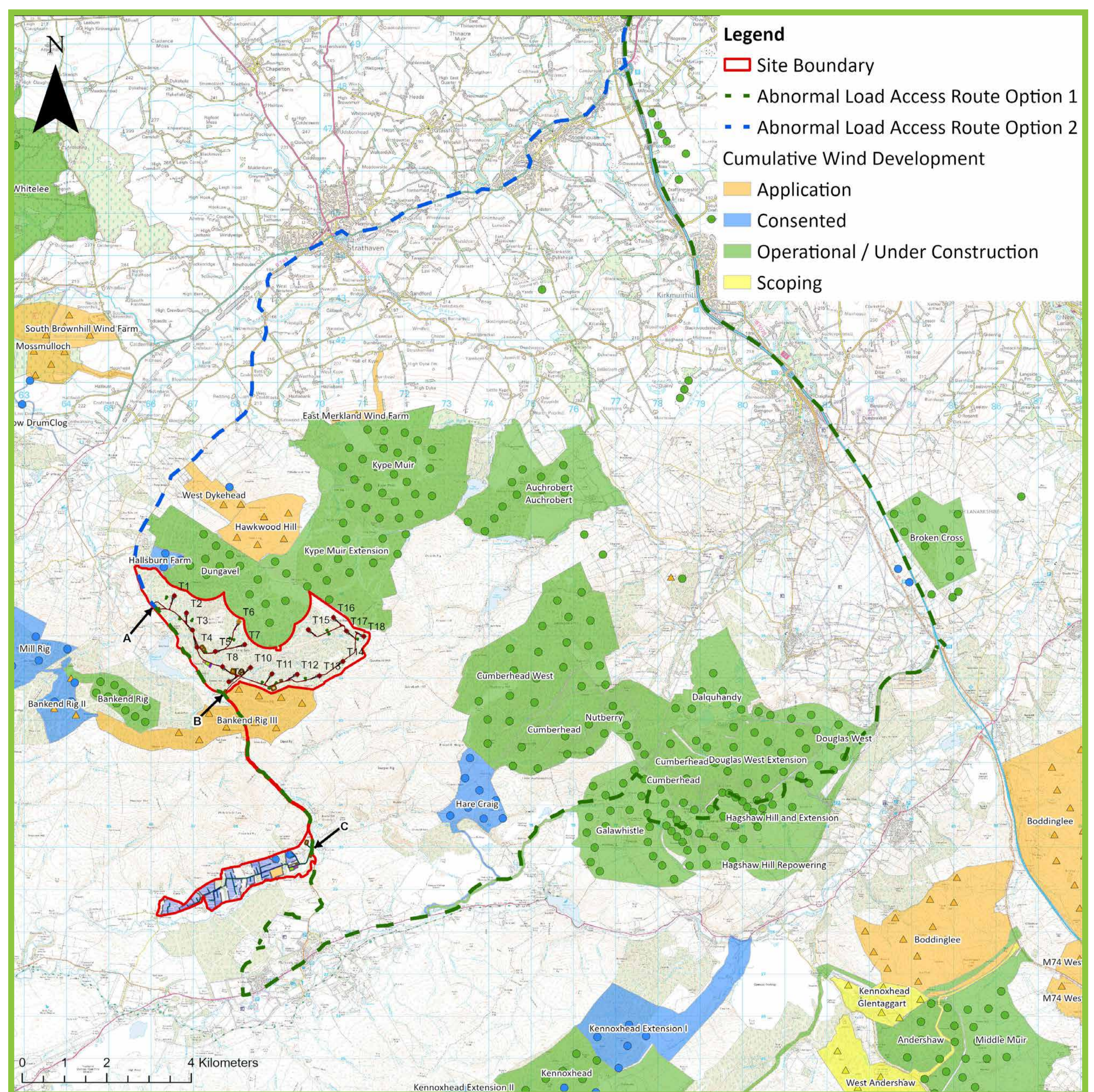


Traffic and transport -

Will assess the effects of the development from traffic travelling to, and from, the site. The exact route for abnormal loads (turbine components) during construction is still to be confirmed. There are currently two options (as shown on the figure to the right):

Option 1 is from Junction 11 of the M74, through the existing Hagshaw Cluster to join the A70 west of Glespin, then following the A70 through Muirkirk, turning north just west of Smallburn following existing tracks through and along the edge of forestry land, to join the B743 and continuing north to site Access Point A.

Option 2 is from Junction 8 of the M74, travelling west along the A71 through Stonehouse and Strathaven, then turning south onto the B743. All wind turbine abnormal loads will enter the site at Point A at Dungavel Forest only.



Hydrology, hydrogeology and geology -

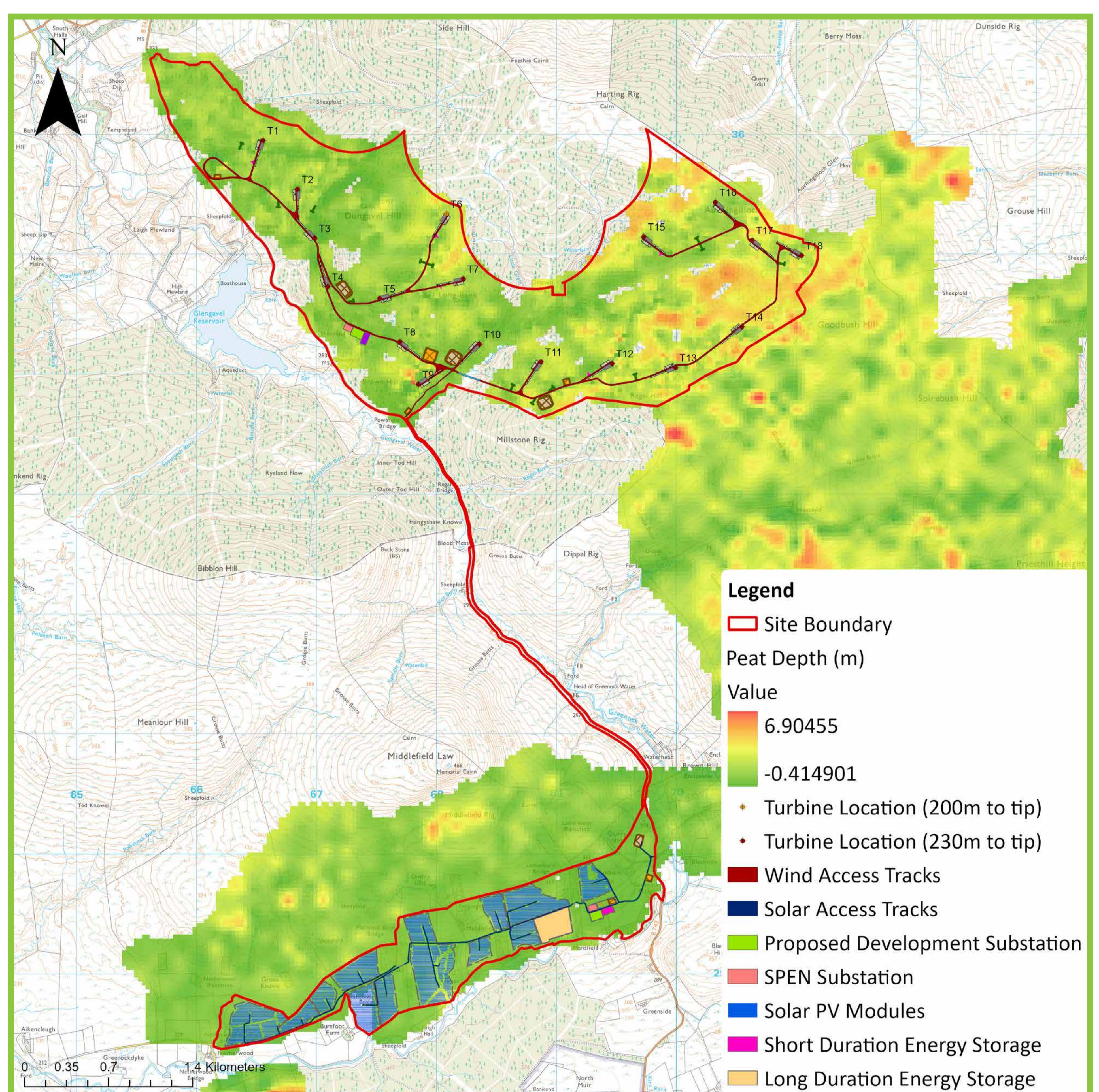
Will assess the effects of the development on surface water, groundwater, carbon stores, rocks and soils. An extensive peat probing exercise has been undertaken across the site to inform the current design. The figure to the right shows the interpolated peat depth map across the site.

Shadow flicker and glint and glare -

Will assess the effects of the development caused by the passing of the turbine blades in front of the sun and the effects of sunlight reflecting off the solar panels.

Aviation, radar and telecommunications -

Will assess the effects of the development on civil and military aviation facilities and air space and telecommunications facilities.



A further issue which will be considered in the EIA is that of potential cumulative impacts: that is, what effect will the development of this project have in conjunction with the operation of any other similar projects in the locality.

The effects of the proposed development on the local and national economy, local tourism businesses, and recreation facilities will be addressed through a separate standalone report.

3R Energy