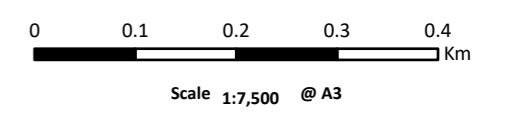
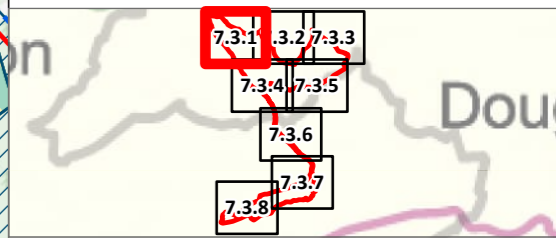


- Legend**
- Site Boundary
 - 15m Survey Area
 - Turbine
 - Access Tracks, Proposed Watercourse
 - Crossings and Turning Heads
 - Turbine Foundations
 - Permanent Hardstanding
 - Compounds
 - Temporary Hardstanding
 - Borrow Pit and Bunds
 - Earthworks
- NVC Habitat Data:**
- H9 - Calluna vulgaris-Deschampsia flexuosa heath
 - H12 - Calluna vulgaris-Vaccinium myrtillus heath
 - H12a - Calluna vulgaris-Vaccinium myrtillus heath, Calluna vulgaris sub-community
 - M6 - Carex echinata-Sphagnum recurvum/auriculatum mire
 - M23 - Juncus effusus/acutiflorus-Galium palustre rush-pasture
 - M25 - Molinia caerulea-Potentilla erecta mire
 - MG10/H12 - Holcus lanatus-Juncus effusus rush-pasture/Calluna vulgaris-Vaccinium myrtillus heath Mosaic
 - MG10a - Holcus lanatus-Juncus effusus rush-pasture, typical sub-community
 - MG9 - Holcus lanatus-Deschampsia cespitosa grassland
 - U20c - Pteridium aquilinum-Galium saxatile community, species-poor sub-community
- Phase1 Habitat Data:**
- A1.2.2 - Coniferous woodland - plantation
 - J4 - Bare ground
- Forestry Habitat Data:**
- Felled Forestry
 - N/A Forestry



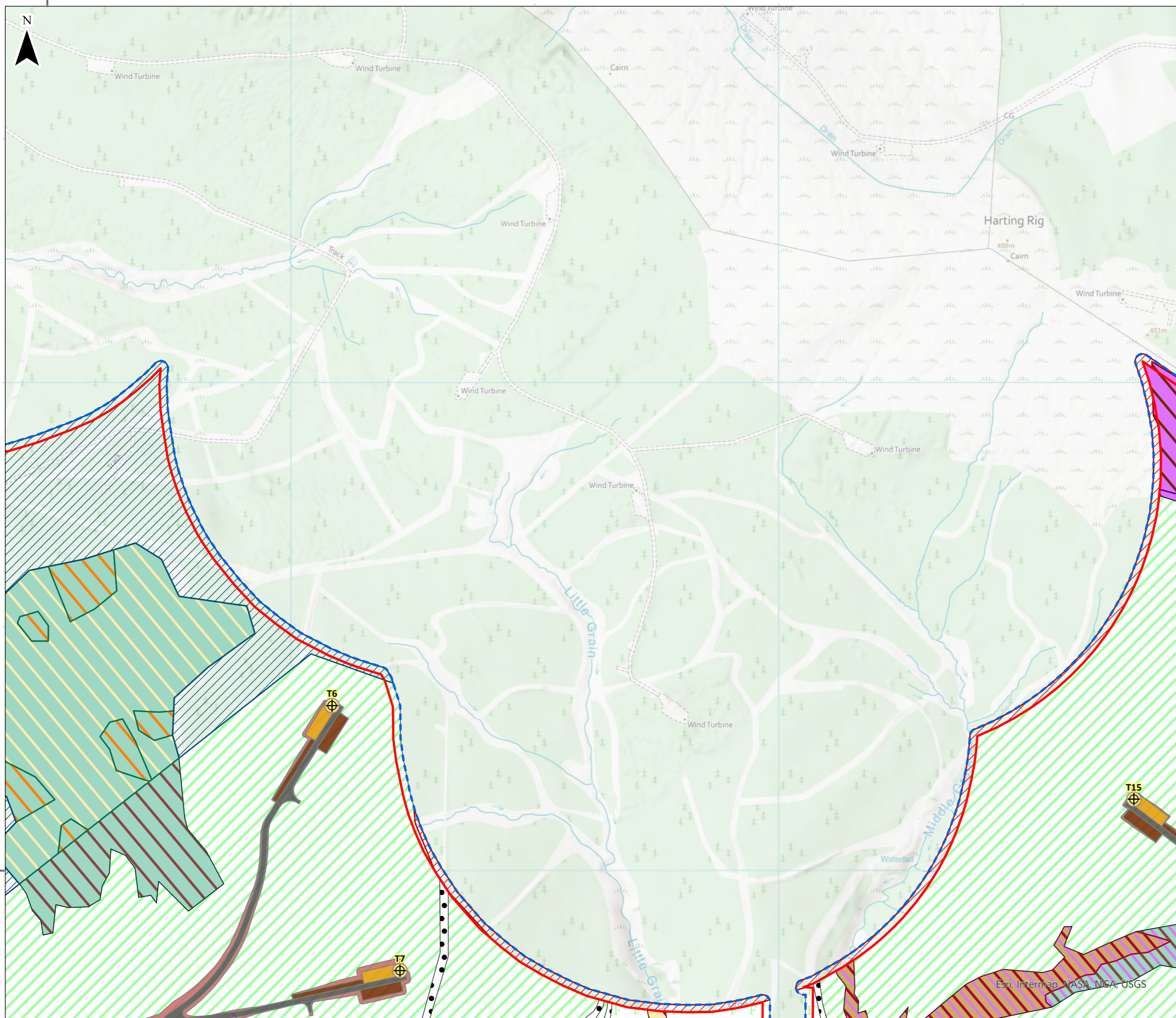
© Crown copyright and database rights 2025. Ordnance Survey AC000808122
British National Grid Coordinate System



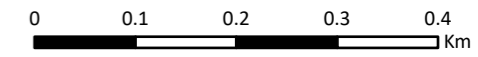
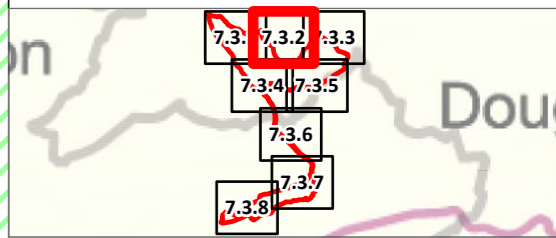
Hagshaw Energy Cluster - Western Expansion
Phase 1
EIA Report

**Figure 7.3a
Habitats**

Esri, Intermap, NASA, NGA, USGS



- Legend**
- Site Boundary
 - 15m Survey Area
 - ⊕ Turbine
 - Access Tracks, Proposed Watercourse
 - Crossings and Turning Heads
 - Turbine Foundations
 - Permanent Hardstanding
 - Temporary Hardstanding
 - Earthworks
- NVC Habitat Data:**
- H9 - Calluna vulgaris-Deschampsia flexuosa heath
 - H12 - Calluna vulgaris-Vaccinium myrtillus heath
 - H12a - Calluna vulgaris-Vaccinium myrtillus heath, Calluna vulgaris sub-community
 - H12a/M23b - Calluna vulgaris-Vaccinium myrtillus heath, Calluna vulgaris sub-community/Juncus effusus/Scutellaria-Galium palustre rush-pasture, Juncus effusus sub-community Mosaic
 - M19a - Calluna vulgaris-Eriophorum vaginatum blanket mire, Erica tetralix sub-community
 - M25a - Molinia caerulea-Potentilla erecta mire, Erica tetralix sub-community
 - U20c - Pteridium aquilinum-Galium saxatile community, species-poor sub-community
 - U20c/M23b/H12a - Pteridium aquilinum-Galium saxatile community, species-poor sub-community/Juncus effusus/Scutellaria-Galium palustre rush-pasture, Juncus effusus sub-community/Calluna vulgaris-Vaccinium myrtillus heath, Calluna vulgaris sub-community Mosaic
- Phase1 Habitat Data:**
- A1.2.2 - Coniferous woodland - plantation
 - A4.2 - Coniferous woodland - recently felled
 - J4 - Bare ground
- Forestry Habitat Data:**
- N/A Forestry
- Other Data:**
- No Data



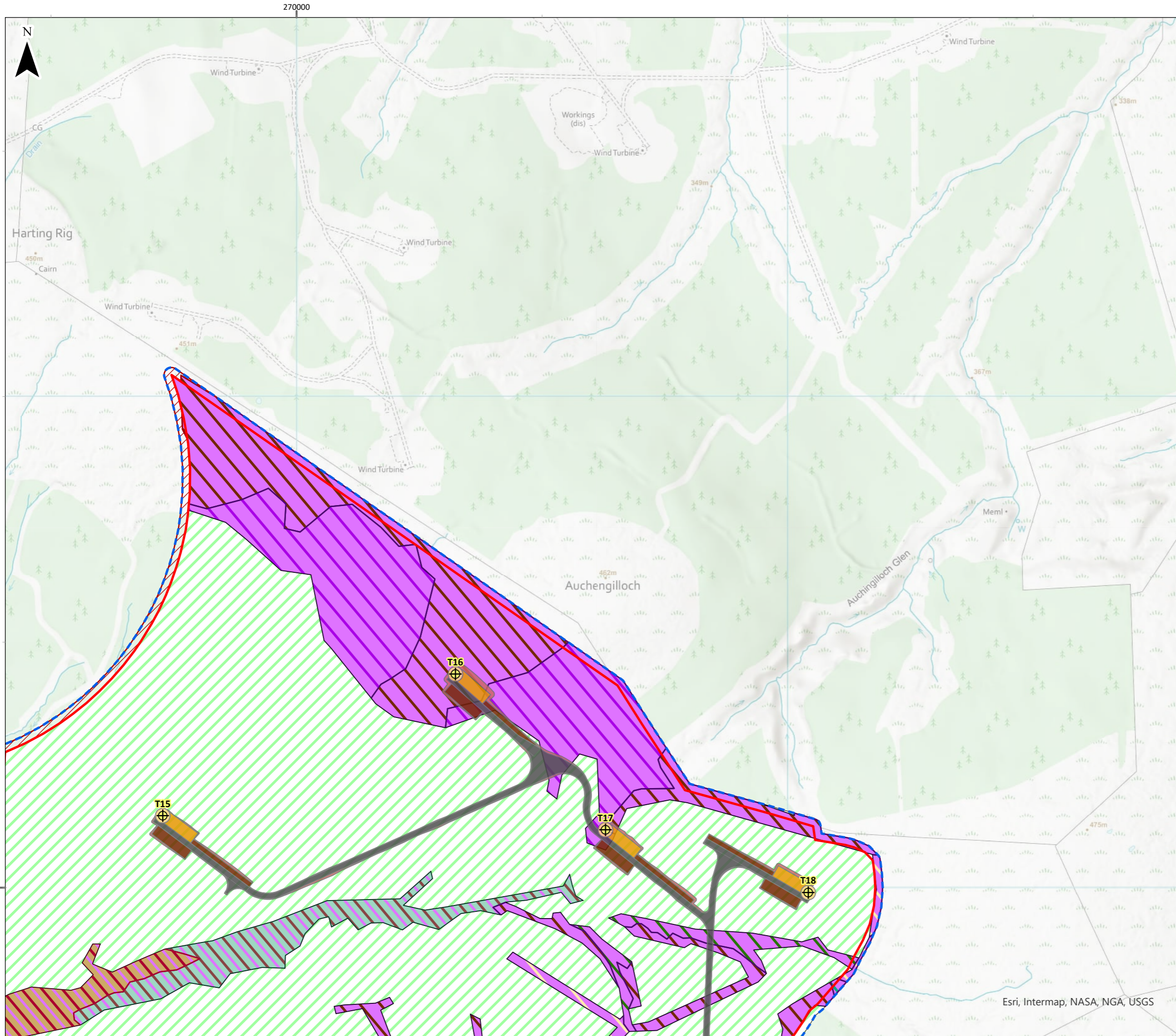
Scale 1:7,500 @ A3

© Crown copyright and database rights 2025. Ordnance Survey AC0000808122
British National Grid Coordinate System



Hagshaw Energy Cluster - Western Expansion
Phase 1
EIA Report

**Figure 7.3b
Habitats**



Legend

- Site Boundary
- 15m Survey Area
- Turbine
- Access Tracks, Proposed Watercourse
- Crossings and Turning Heads
- Turbine Foundations
- Permanent Hardstanding
- Temporary Hardstanding
- Earthworks

NVC Habitat Data:

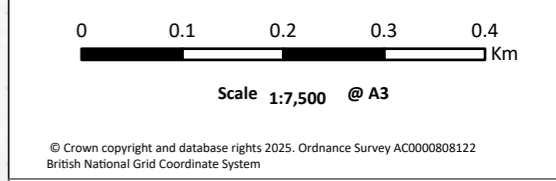
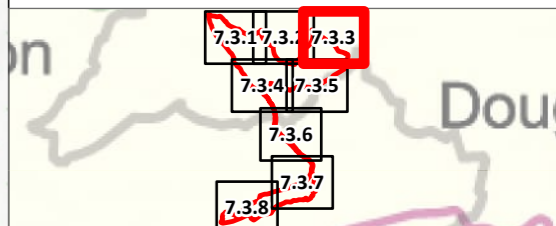
- H12a/M23b - Calluna vulgaris-Vaccinium myrtillus heath, Calluna vulgaris sub-community/Juncus effusus/acetiflorus-Galium palustre rush-pasture, Juncus effusus sub-community Mosaic
- M17a - Scirpus cespitosus-Eriophorum vaginatum blanket mire, Drosera rotundifolia-Sphagnum spp. sub-community
- M19a - Calluna vulgaris-Eriophorum vaginatum blanket mire, Erica tetralix sub-community
- M23a - Juncus effusus/acetiflorus-Galium palustre rush-pasture, Juncus acetiflorus sub-community
- M23b - Juncus effusus/acetiflorus-Galium palustre rush-pasture, Juncus effusus sub-community
- M25a - Molinia caerulea-Potentilla erecta mire, Erica tetralix sub-community
- U20c/M23b/H12a - Pteridium aquilinum-Galium saxatile community, species-poor sub-community/Juncus effusus/acetiflorus-Galium palustre rush-pasture, Juncus effusus sub-community/Calluna vulgaris-Vaccinium myrtillus heath, Calluna vulgaris sub-community Mosaic

Phase1 Habitat Data:

- A1.2.2 - Coniferous woodland - plantation

Other Data:

- No Data



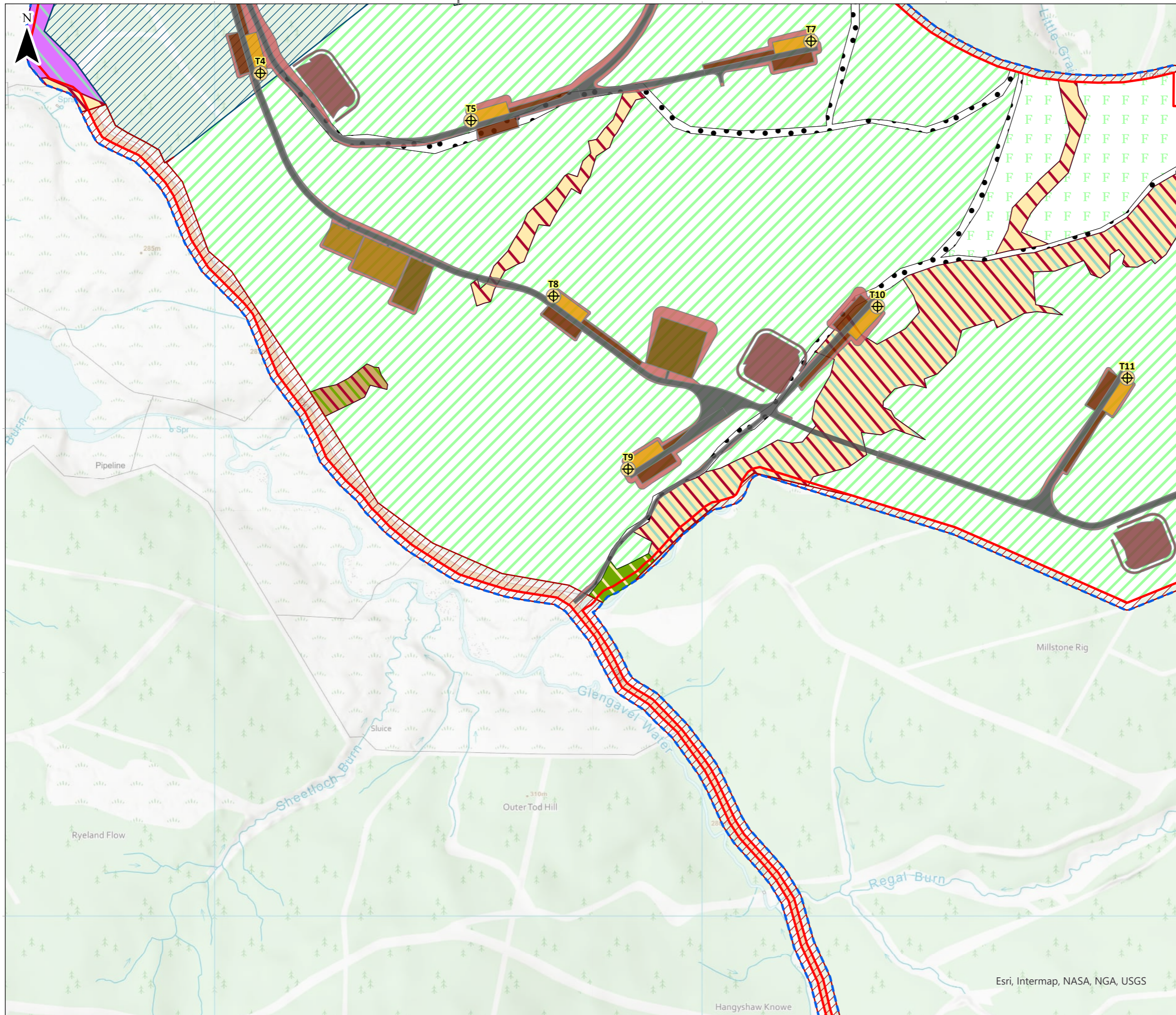
Hagsshaw Energy Cluster - Western Expansion
Phase 1
EIA Report

**Figure 7.3c
Habitats**

270000

270000

Esri, Intermap, NASA, NGA, USGS



Legend

- Site Boundary
- 15m Survey Area
- Turbine
- Access Tracks, Proposed Watercourse
- Crossings and Turning Heads
- Turbine Foundations
- Permanent Hardstanding
- Substations
- Compounds
- Temporary Hardstanding
- Borrow Pit and Bunds
- Earthworks

NVC Habitat Data:

- H12a - Calluna vulgaris-Vaccinium myrtillus heath, Calluna vulgaris sub-community
- M23 - Juncus effusus/acutiflorus-Galium palustre rush-pasture
- U20c - Pteridium aquilinum-Galium saxatile community, species-poor sub-community
- U20c/H12a/M23b - Pteridium aquilinum-Galium saxatile community, species-poor sub-community/Calluna vulgaris-Vaccinium myrtillus heath, Calluna vulgaris sub-community/Juncus effusus/acutiflorus-Galium palustre rush-pasture, Juncus effusus sub-community Mosaic
- U20c/W4 - Pteridium aquilinum-Galium saxatile community, species-poor sub-community/Betula pubescens-Molinia caerulea woodland Mosaic
- W4b - Betula pubescens-Molinia caerulea woodland, Juncus effusus sub-community

Phase 1 Habitat Data:

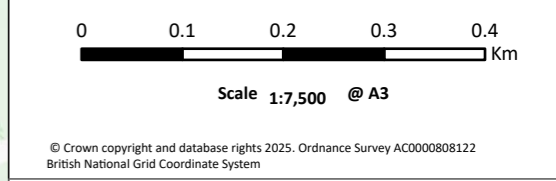
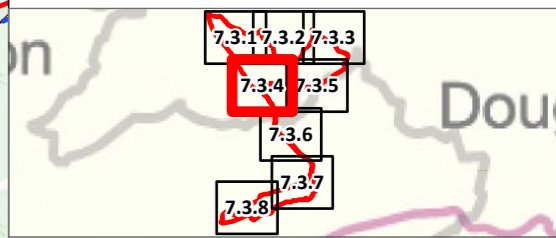
- A1.2.2 - Coniferous woodland - plantation
- A4.2 - Coniferous woodland - recently felled
- J4 - Bare ground

Forestry Habitat Data:

- N/A Forestry

Other Data:

- No Data



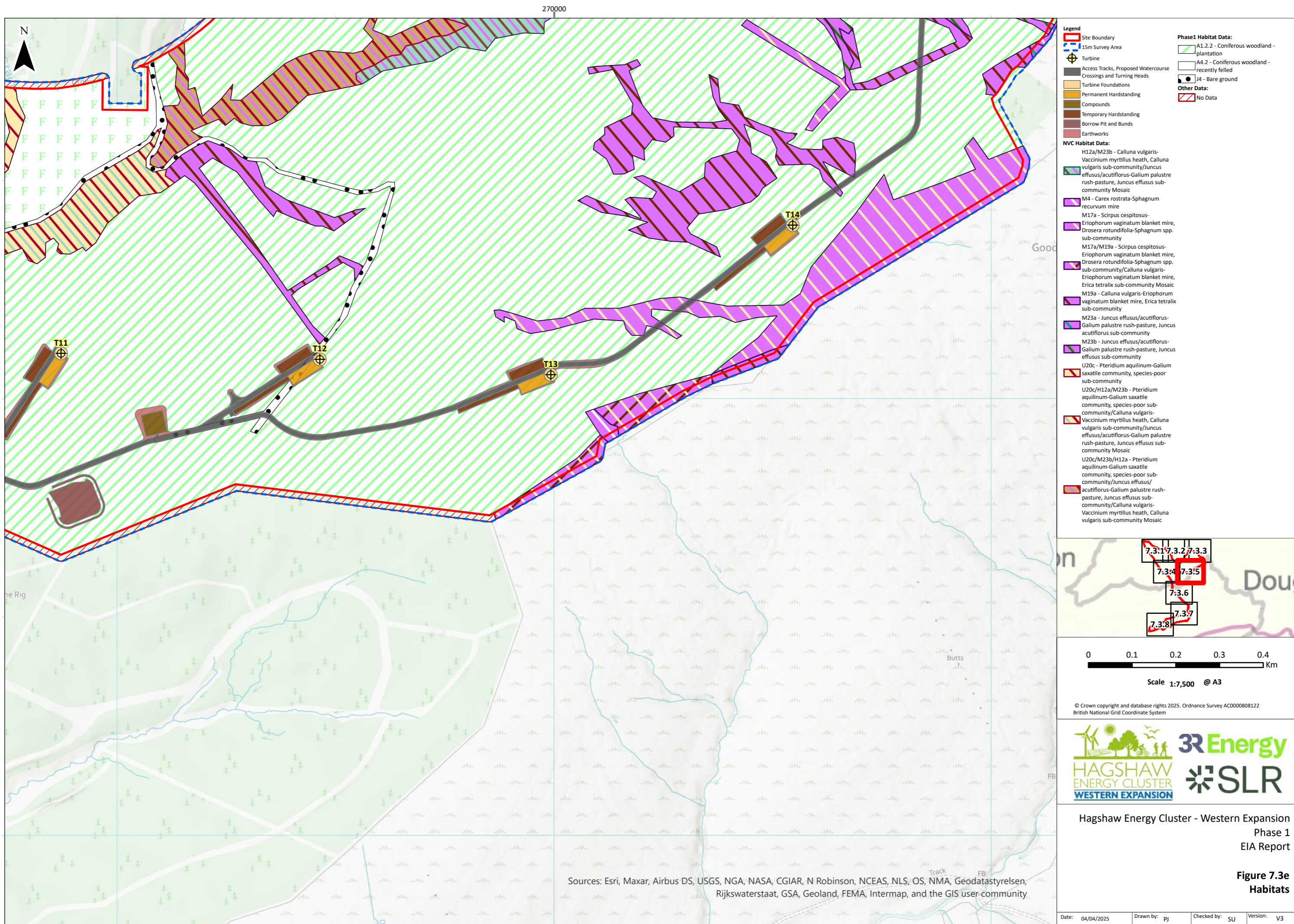
© Crown copyright and database rights 2025. Ordnance Survey AC0000808122
British National Grid Coordinate System

Hagshaw Energy Cluster - Western Expansion
Phase 1
EIA Report

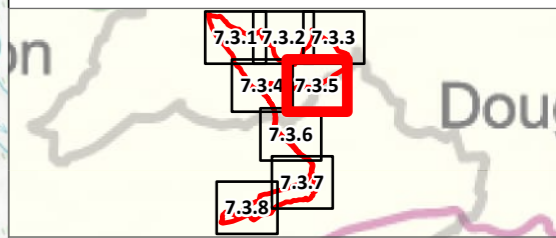
**Figure 7.3d
Habitats**

Date: 04/04/2025 Drawn by: pj Checked by: SJ Version: V3

Esri, Intermap, NASA, NGA, USGS



- Legend**
- Site Boundary
 - 15m Survey Area
 - Turbine
 - Access Tracks, Proposed Watercourse
 - Crossings and Turning Heads
 - Turbine Foundations
 - Permanent Hardstanding
 - Compounds
 - Temporary Hardstanding
 - Borrow Pit and Bunds
 - Earthworks
- Phase1 Habitat Data:**
- A1.2.2 - Coniferous woodland - plantation
 - A4.2 - Coniferous woodland - recently felled
 - J4 - Bare ground
 - No Data
- NVC Habitat Data:**
- H12a/M23b - Calluna vulgaris-Vaccinium myrtillus heath, Calluna vulgaris sub-community/Juncus effusus/acutiflorus-Galium palustre rush-pasture, Juncus effusus sub-community Mosaic
 - M4 - Carex rostrata-Sphagnum recurvum mire
 - M17a - Scirpus cespitosus-Eriophorum vaginatum blanket mire, Drosera rotundifolia-Sphagnum spp. sub-community
 - M17a/M19a - Scirpus cespitosus-Eriophorum vaginatum blanket mire, Drosera rotundifolia-Sphagnum spp. sub-community/Calluna vulgaris-Eriophorum vaginatum blanket mire, Erica tetralix sub-community Mosaic
 - M19a - Calluna vulgaris-Eriophorum vaginatum blanket mire, Erica tetralix sub-community
 - M23a - Juncus effusus/acutiflorus-Galium palustre rush-pasture, Juncus acutiflorus sub-community
 - M23b - Juncus effusus/acutiflorus-Galium palustre rush-pasture, Juncus effusus sub-community
 - U20c - Pteridium aquilinum-Galium saxatile community, species-poor sub-community
 - U20c/H12a/M23b - Pteridium aquilinum-Galium saxatile community, species-poor sub-community/Calluna vulgaris-Vaccinium myrtillus heath, Calluna vulgaris sub-community/Juncus effusus/acutiflorus-Galium palustre rush-pasture, Juncus effusus sub-community Mosaic
 - U20c/M23b/H12a - Pteridium aquilinum-Galium saxatile community, species-poor sub-community/Juncus effusus/acutiflorus-Galium palustre rush-pasture, Juncus effusus sub-community/Calluna vulgaris-Vaccinium myrtillus heath, Calluna vulgaris sub-community Mosaic



0 0.1 0.2 0.3 0.4 Km

Scale 1:7,500 @ A3

© Crown copyright and database rights 2025. Ordnance Survey AC000808122
British National Grid Coordinate System

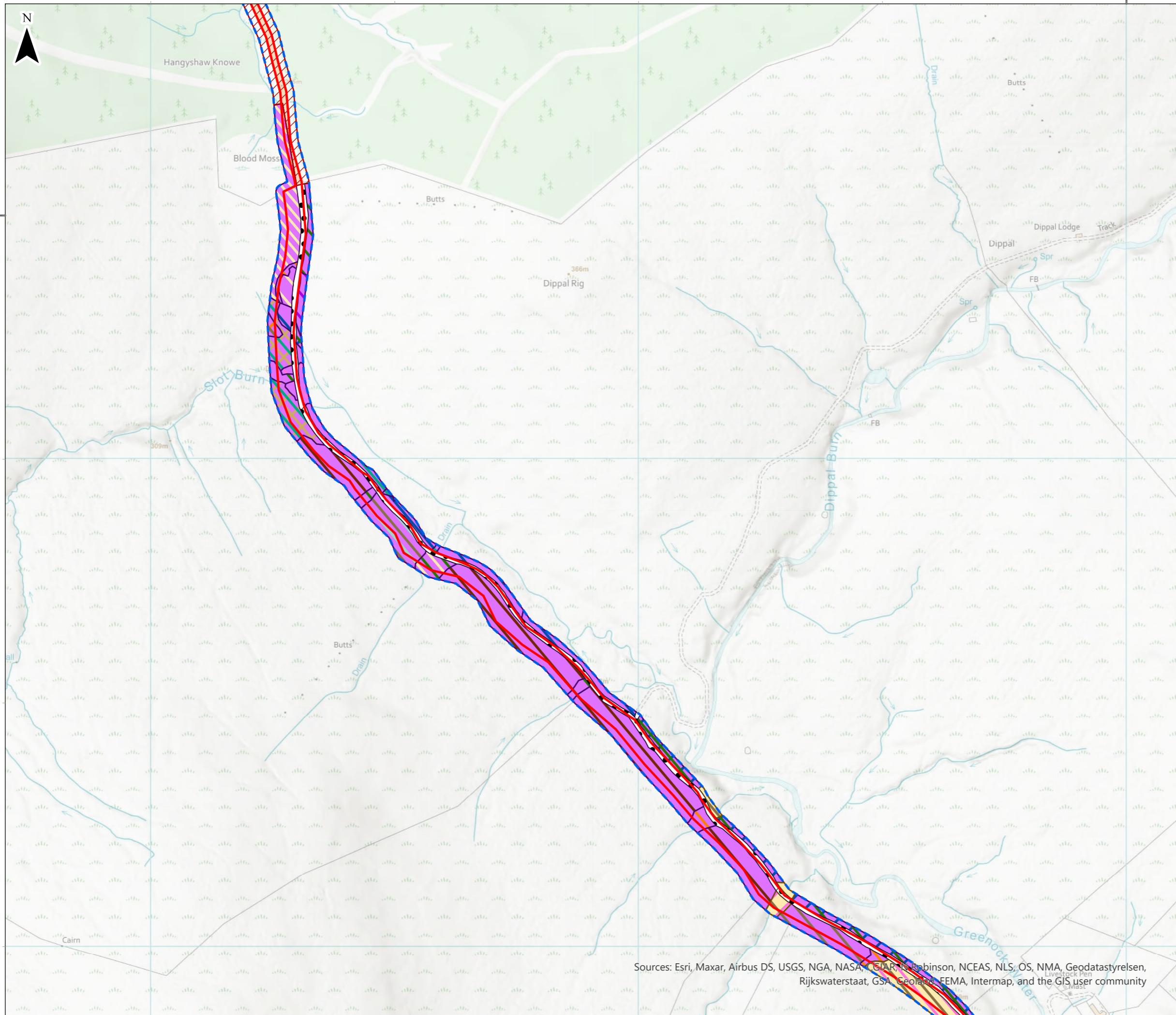


Hagshaw Energy Cluster - Western Expansion
Phase 1
EIA Report

**Figure 7.3e
Habitats**

Date: 04/04/2025 Drawn by: pj Checked by: SJ Version: V3

Sources: Esri, Maxar, Airbus DS, USGS, NGA, NASA, CGIAR, N Robinson, NCEAS, NLS, OS, NMA, Geodatastyrelsen, Rijkswaterstaat, GSA, Geoland, FEMA, Intermap, and the GIS user community



Legend

- Site Boundary
- 15m Survey Area

NVC Habitat Data:

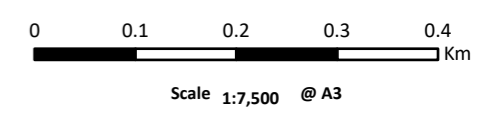
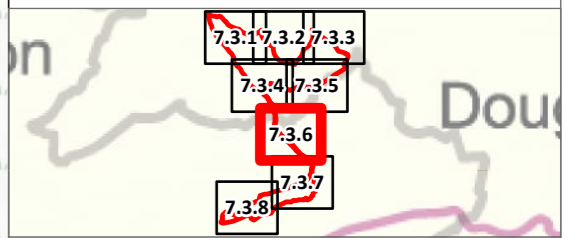
- M6c - Carex echinata-Sphagnum recurvum/auriculatum mire, Juncus effusus sub-community
- M17a - Scirpus cespitosus-Eriophorum vaginatum blanket mire, Drosera rotundifolia-Sphagnum spp. sub-community
- M17a/b - Scirpus cespitosus-Eriophorum vaginatum blanket mire, Drosera rotundifolia-Sphagnum spp. sub-community & Cladonia spp. sub-community Mosaic
- M19a - Calluna vulgaris-Eriophorum vaginatum blanket mire, Erica tetralix sub-community
- M20b - Eriophorum vaginatum blanket and raised mire, Calluna vulgaris-Cladonia spp. sub-community
- M20b/H12a - Eriophorum vaginatum blanket and raised mire, Calluna vulgaris-Cladonia spp. sub-community/Calluna vulgaris-Vaccinium myrtillus heath, Calluna vulgaris sub-community Mosaic
- M20b/M6c - Eriophorum vaginatum blanket and raised mire, Calluna vulgaris-Cladonia spp. sub-community/Carex echinata-Sphagnum recurvum/auriculatum mire, Juncus effusus sub-community Mosaic
- M23a - Juncus effusus/acidiflorus-Galium palustre rush-pasture, Juncus acidiflorus sub-community
- M23a/b - Juncus effusus/acidiflorus-Galium palustre rush-pasture, Juncus acidiflorus sub-community & Juncus effusus sub-community Mosaic
- M23a/MG9a - Juncus effusus/acidiflorus-Galium palustre rush-pasture, Juncus acidiflorus sub-community/Holcus lanatus-Deschampsia cespitosa grassland, Poa trivialis sub-community Mosaic
- M23b - Juncus effusus/acidiflorus-Galium palustre rush-pasture, Juncus effusus sub-community
- M23b/M25 - Juncus effusus/acidiflorus-Galium palustre rush-pasture, Juncus effusus sub-community/Molinia caerulea-Potentilla erecta mire Mosaic
- M23b/US - Juncus effusus/acidiflorus-Galium palustre rush-pasture, Juncus effusus sub-community/Nardus stricta-Galium saxatile grassland Mosaic
- M25 - Molinia caerulea-Potentilla erecta mire
- M25a - Molinia caerulea-Potentilla erecta mire, Erica tetralix sub-community
- M28a - Iris pseudacorus-Filipendula ulmaria mire, Juncus spp. sub-community
- USb - Nardus stricta-Galium saxatile grassland, Agrostis canina-Polytrichum commune sub-community
- USb/M25/M23b - Nardus stricta-Galium saxatile grassland, Agrostis canina-Polytrichum commune sub-community/Molinia caerulea-Potentilla erecta mire/Juncus effusus/acidiflorus-Galium palustre rush-pasture, Juncus effusus sub-community Mosaic
- USb/M6c - Nardus stricta-Galium saxatile grassland, Agrostis canina-Polytrichum commune sub-community/Carex echinata-Sphagnum recurvum/auriculatum mire, Juncus effusus sub-community Mosaic

Phase 1 Habitat Data:

- J4 - Bare ground

Other Data:

- No Data



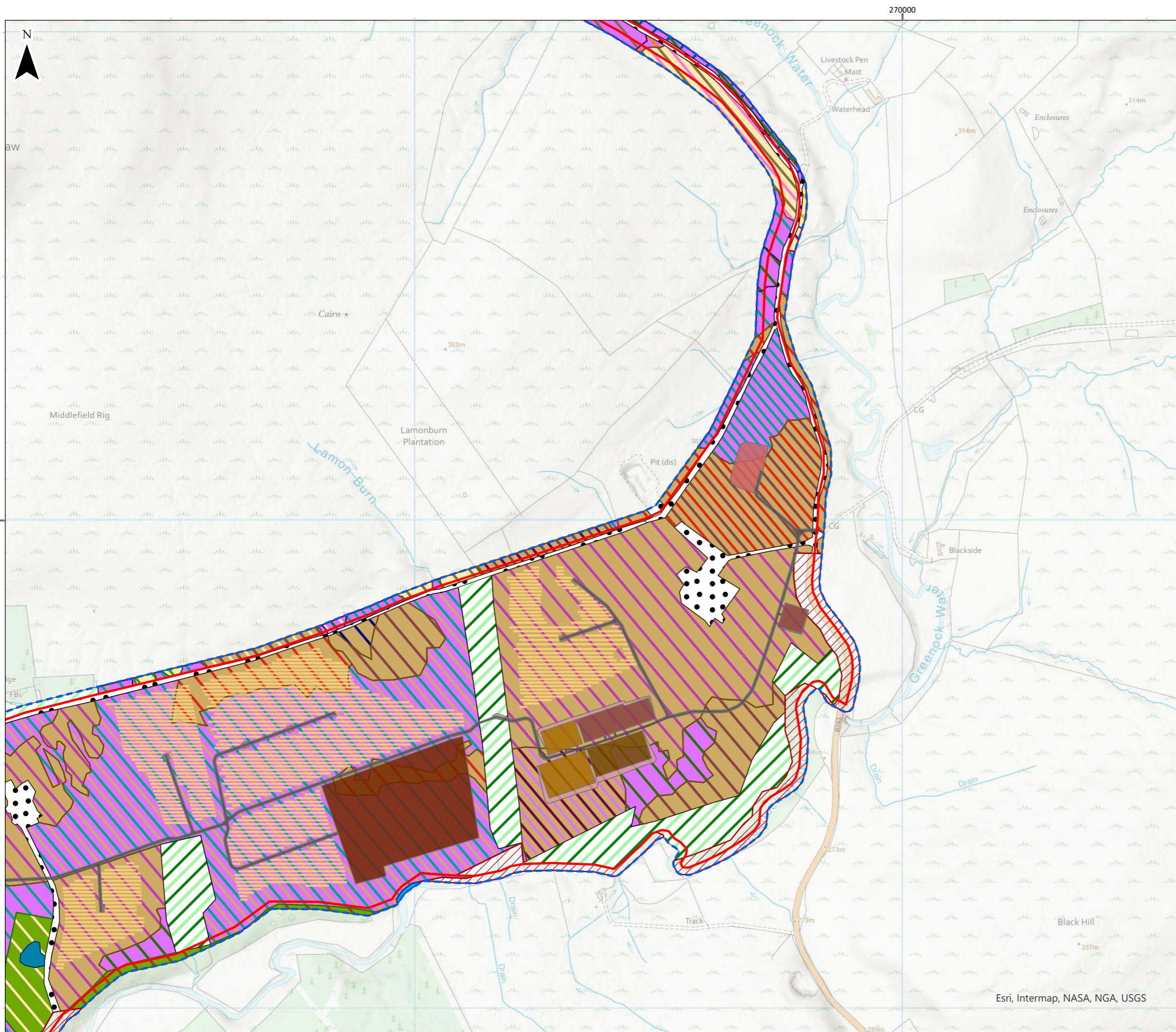
© Crown copyright and database rights 2025. Ordnance Survey AC0000808122
British National Grid Coordinate System



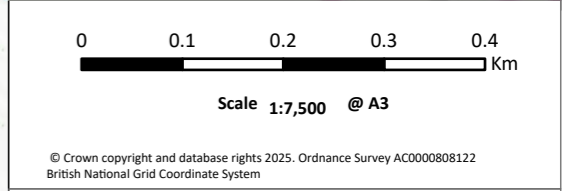
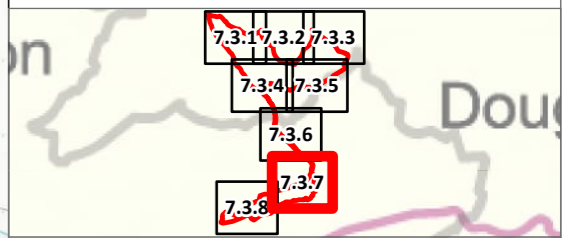
Hagshaw Energy Cluster - Western Expansion
Phase 1
EIA Report

Figure 7.3f
Habitats

Sources: Esri, Maxar, Airbus DS, USGS, NGA, NASA, CGIAR, Robinson, NCEAS, NLS, OS, NMA, Geodatastyrelsen, Rijkswaterstaat, GSA, Geoland, FEMA, Intermap, and the GIS user community

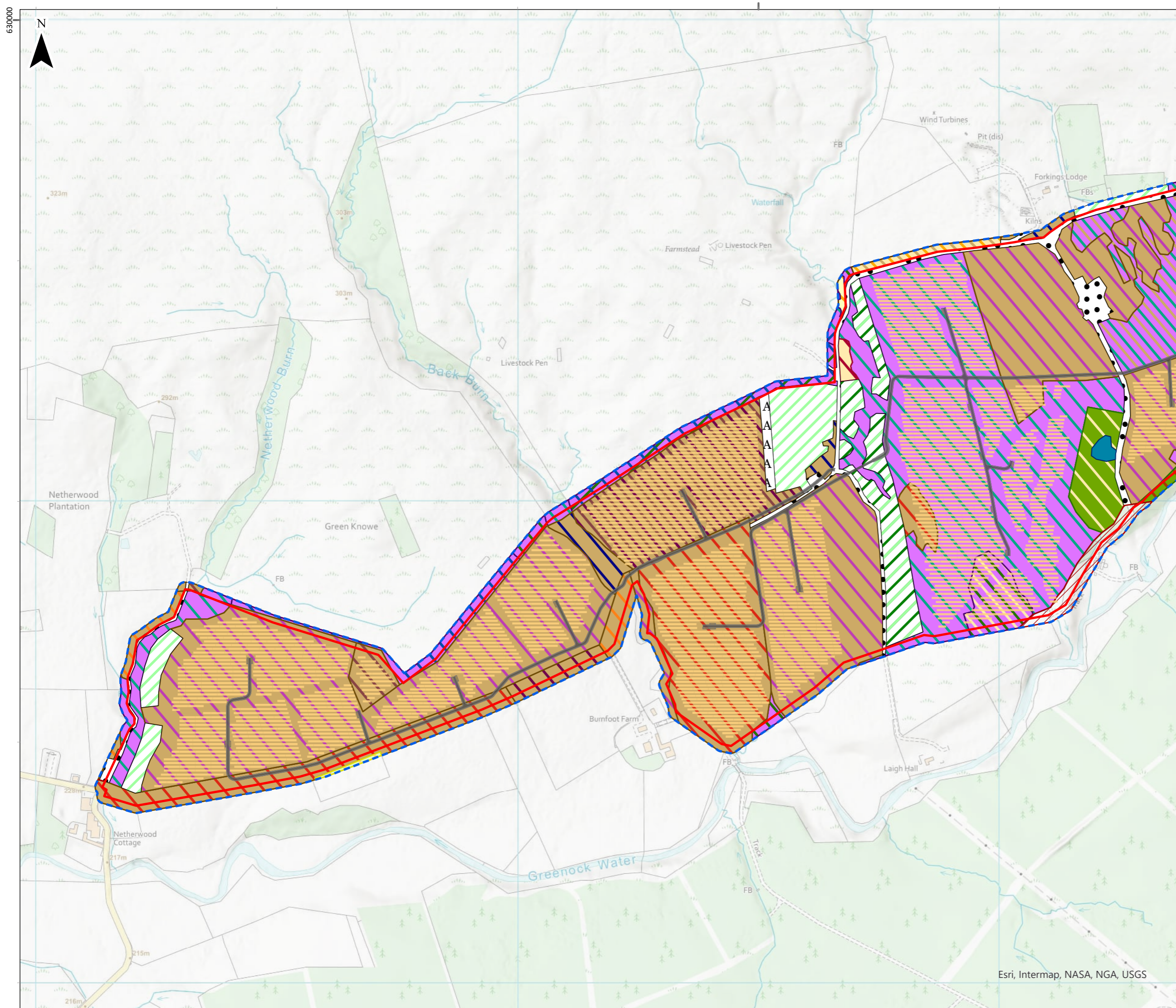


- Legend**
- Site Boundary
 - 15m Survey Area
 - Solar Farm Tracks and Proposed Watercourse Crossings
 - Solar PV Module
 - Solar Inverters
 - Substations
 - Short Duration Energy Storage
 - Long Duration Energy Storage
 - Construction Compounds
 - Borrow Pit
 - Earthworks
- NVC Habitat Data:**
- M6c - Carex echinata-Sphagnum recurvum/auriculatum mire, Juncus effusus sub-community
 - M20b - Eriophorum vaginatum blanket and raised mire, Calluna vulgaris-Cladonia spp. sub-community
 - M23a - Juncus effusus/acetiflorus-Galium palustre rush-pasture, Juncus acetiflorus sub-community
 - M23a/b - Juncus effusus/acetiflorus-Galium palustre rush-pasture, Juncus acetiflorus sub-community & Juncus effusus sub-community Mosaic
 - M23a/MG6b - Juncus effusus/acetiflorus-Galium palustre rush-pasture, Juncus acetiflorus sub-community/Lolium perenne-Cynosurus cristatus grassland, Anthoxanthum odoratum sub-community Mosaic
 - M23a/MG9 - Juncus effusus/acetiflorus-Galium palustre rush-pasture, Juncus acetiflorus sub-community/Holcus lanatus-Deschampsia cespitosa grassland Mosaic
 - M23b - Juncus effusus/acetiflorus-Galium palustre rush-pasture, Juncus effusus sub-community
 - M23b/M25 - Juncus effusus/acetiflorus-Galium palustre rush-pasture, Juncus effusus sub-community/Molinia caerulea-Potentilla erecta mire Mosaic
 - M23b/US - Juncus effusus/acetiflorus-Galium palustre rush-pasture, Juncus effusus sub-community/Nardus stricta-Galium saxatile grassland Mosaic
 - MG10a - Holcus lanatus-Juncus effusus rush-pasture, typical sub-community
 - MG10a/U4a - Holcus lanatus-Juncus effusus rush-pasture, typical sub-community/Festuca ovina-Agrostis capillaris-Galium saxatile grassland, typical sub-community Mosaic
 - MG6b - Lolium perenne-Cynosurus cristatus grassland, Anthoxanthum odoratum sub-community
 - MG6b/MG10a - Lolium perenne-Cynosurus cristatus grassland, Anthoxanthum odoratum sub-community/Holcus lanatus-Juncus effusus rush-pasture, typical sub-community Mosaic
 - MG7 - Lolium perenne leys and related grasslands
 - MG7a/M23b - Lolium perenne leys and related grasslands, Lolium perenne-Trifolium repens leys/Juncus effusus/acetiflorus-Galium palustre rush-pasture, Juncus effusus sub-community Mosaic
 - MG7a/MG10a - Lolium perenne leys and related grasslands, Lolium perenne-Trifolium repens leys/Holcus lanatus-Juncus effusus rush-pasture, typical sub-community Mosaic
 - MG9a - Holcus lanatus-Deschampsia cespitosa grassland, Poa trivialis sub-community
 - U4a - Festuca ovina-Agrostis capillaris-Galium saxatile grassland, typical sub-community
 - U5a - Nardus stricta-Galium saxatile grassland, species-poor sub-community
 - U5b - Nardus stricta-Galium saxatile grassland, Agrostis canina-Polytrichum commune sub-community
 - U5b/M25/M23b - Nardus stricta-Galium saxatile grassland, Agrostis canina-Polytrichum commune sub-community/Molinia caerulea-Potentilla erecta mire/Juncus effusus/acetiflorus-Galium palustre rush-pasture, Juncus effusus sub-community Mosaic
 - U20c - Pteridium aquilinum-Galium saxatile community, species-poor sub-community
 - W4b - Betula pubescens-Molinia caerulea woodland, Juncus effusus sub-community
 - W7a - Alnus glutinosa-Fraxinus excelsior-Lysimachia nemorum woodland, Urtica dioica sub-community
- Phase1 Habitat Data:**
- A1.2.2 - Coniferous woodland - plantation
 - A1.3.2 - Mixed woodland - plantation
 - J4 - Bare ground
- Other Data:**
- No Data
 - Running Water
 - Standing Water

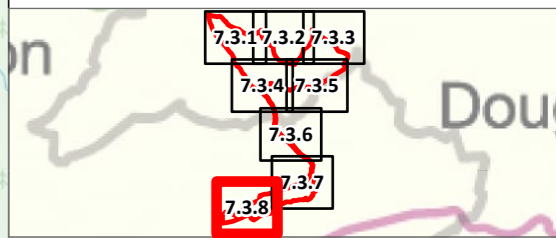


Hagsshaw Energy Cluster - Western Expansion
Phase 1
EIA Report

**Figure 7.3g
Habitats**



- Legend**
- Site Boundary
 - 15m Survey Area
 - Solar Farm Tracks and Proposed Watercourse Crossings
 - Solar PV Module
 - Solar Inverters
 - Earthworks
- NVC Habitat Data:**
- CG10a - Festuca ovina-Agrostis capillaris-Thymus praecox grassland, Trifolium repens-Luzula campestris sub-community
 - M23a - Juncus effusus/acetiflorus-Galium palustre rush-pasture, Juncus acetiflorus sub-community
 - M23a/M25 - Juncus effusus/acetiflorus-Galium palustre rush-pasture, Juncus acetiflorus sub-community/Molinia caerulea-Potentilla erecta mire Mosaic
 - M23a/MG6b - Juncus effusus/acetiflorus-Galium palustre rush-pasture, Juncus acetiflorus sub-community/Lolium perenne-Cynosurus cristatus grassland, Anthoxanthum odoratum sub-community Mosaic
 - M23a/MG9 - Juncus effusus/acetiflorus-Galium palustre rush-pasture, Juncus acetiflorus sub-community/Holcus lanatus-Deschampsia cespitosa grassland Mosaic
 - M23b - Juncus effusus/acetiflorus-Galium palustre rush-pasture, Juncus effusus sub-community
 - M23b/US - Juncus effusus/acetiflorus-Galium palustre rush-pasture, Juncus effusus sub-community/Nardus stricta-Galium saxatile grassland Mosaic
 - M25 - Molinia caerulea-Potentilla erecta mire
 - M25/M23b/USa - Molinia caerulea-Potentilla erecta mire/Juncus effusus/acetiflorus-Galium palustre rush-pasture, Juncus effusus sub-community/Nardus stricta-Galium saxatile grassland, species-poor sub-community Mosaic
 - M27 - Filipendula ulmaria-Angelica sylvestris mire
 - MG10a - Holcus lanatus-Juncus effusus rush-pasture, typical sub-community
 - MG5b - Cynosurus cristatus-Centaurea nigra grassland, Galium verum sub-community
 - MG6a - Lolium perenne-Cynosurus cristatus grassland, typical sub-community
 - MG6b - Lolium perenne-Cynosurus cristatus grassland, Anthoxanthum odoratum sub-community
 - MG7 - Lolium perenne leys and related grasslands
 - MG7a - Lolium perenne leys and related grasslands, Lolium perenne-Trifolium repens leys
 - MG7a/MG10a - Lolium perenne leys and related grasslands, Lolium perenne-Trifolium repens leys/Holcus lanatus-Juncus effusus rush-pasture, typical sub-community Mosaic
 - MG9a - Holcus lanatus-Deschampsia cespitosa grassland, Poa trivialis sub-community
 - OV2 - Briza minor-Silene gallica community
 - U4a/MG10a - Festuca ovina-Agrostis capillaris-Galium saxatile grassland, typical sub-community/Holcus lanatus-Juncus effusus rush-pasture, typical sub-community Mosaic
 - U20c - Pteridium aquilinum-Galium saxatile community, species-poor sub-community
 - W4b - Betula pubescens-Molinia caerulea woodland, Juncus effusus sub-community
 - W7a - Alnus glutinosa-Fraxinus excelsior-Lysimachia nemorum woodland, Urtica dioica sub-community
- Phase1 Habitat Data:**
- A1.2.2 - Coniferous woodland - plantation
 - A1.3.2 - Mixed woodland - plantation
 - J1.1 - Cultivated/disturbed land - arable
 - J4 - Bare ground
- Other Data:**
- No Data
 - Standing Water



0 0.1 0.2 0.3 0.4 Km

Scale 1:7,500 @ A3

© Crown copyright and database rights 2025. Ordnance Survey AC000080122
British National Grid Coordinate System



Hagsshaw Energy Cluster - Western Expansion
Phase 1
EIA Report

**Figure 7.3h
Habitats**

Esri, Intermap, NASA, NGA, USGS