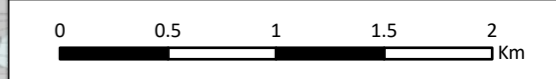


**Legend**  
 Site Boundary

- Superficial Geology**
- Alluvial Fan Deposits - Gravel, Sand, Silt And Clay
  - Alluvial Fan Deposits - Sand And Gravel
  - Alluvium - Clay, Silt, Sand And Gravel
  - Alluvium - Gravel, Sand And Silt
  - Alluvium - Silt, Sand And Gravel
  - Glaciofluvial Deltaic (and/or Subaqueous Fan) Deposits - Gravel, Sand And Silt
  - Glaciofluvial Deposits - Gravel, Sand And Silt
  - Glaciofluvial Deposits - Sand And Gravel
  - Glaciofluvial Ice Contact Deposits - Gravel, Sand And Silt
  - Glaciofluvial Sheet Deposits - Gravel, Sand And Silt
  - Glaciolacustrine Deposits - Clay, Silt And Sand
  - Glaciolacustrine Deposits - Silt And Clay
  - Hummocky (moundy) Glacial Deposits - Diamicton, Sand And Gravel
  - Peat - Peat
  - River Terrace Deposits - Sand And Gravel
  - River Terrace Deposits, 1 - Sand And Gravel
  - Superficial Deposits - Sediment
  - Talus - Rock Fragments, Angular, Undifferentiated Source Rock
  - Till, Devensian - Diamicton
  - Bedrock at or Near Surface



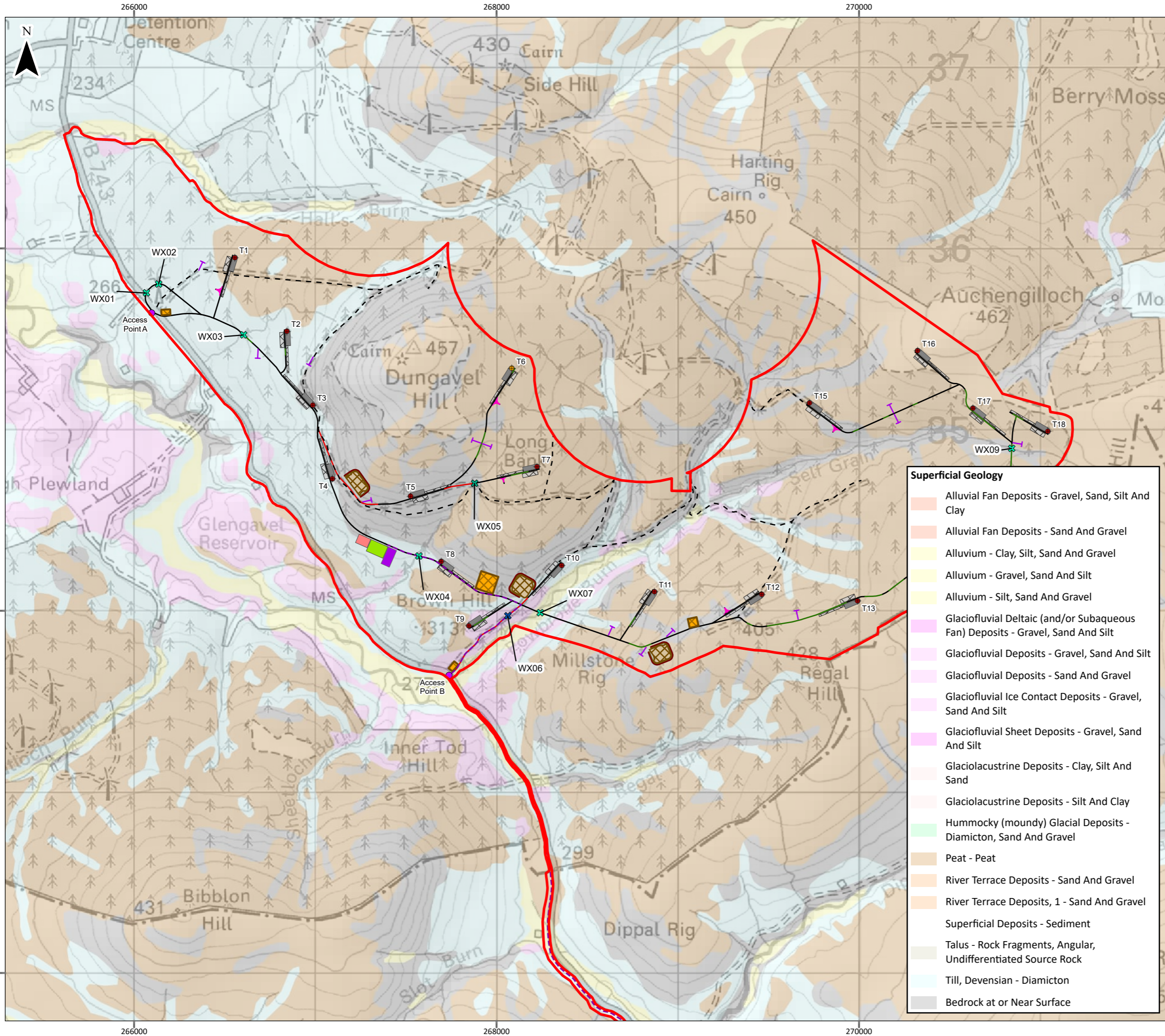
Scale 1:35,000 @ A3  
 © Crown copyright and database rights 2025. Ordnance Survey AC0000808122  
 British National Grid Coordinate System  
 Superficial Geology data obtained via BGS WMS. British Geological Survey ©NERC.  
 All Rights Reserved [2025]



Hagsshaw Energy Cluster - Western Expansion  
 Phase 1  
 EIA Report

**Figure 8.3a  
 Superficial Geology**





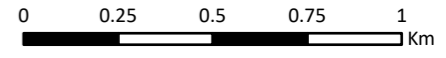
**Legend**

- Site Boundary
  - ◆ Turbine Location (200m to tip)
  - ◆ Turbine Location (230m to tip)
  - Temporary Hardstand
  - Permanent Hardstand
  - Turning Heads
  - Underground Electricity Export Cable(s)
  - Proposed Development Substation
  - SPEN Substation
  - SPEN Temporary Compound + BESS
  - Temporary Construction Compound
  - Borrow Pit and Bund
  - Borrow Pit Surface Water Drain
  - Proposed Access Location
- Access Tracks**
- Existing - Upgraded
  - Floating
  - Cut
  - Existing Forest Road
  - Forestry Spur Road

- Watercourse Crossing**
- ✕ New
  - ✕ Existing - Upgraded
  - ✕ Existing

**Superficial Geology**

- Alluvial Fan Deposits - Gravel, Sand, Silt And Clay
- Alluvial Fan Deposits - Sand And Gravel
- Alluvium - Clay, Silt, Sand And Gravel
- Alluvium - Gravel, Sand And Silt
- Alluvium - Silt, Sand And Gravel
- Glaciofluvial Deltaic (and/or Subaqueous Fan) Deposits - Gravel, Sand And Silt
- Glaciofluvial Deposits - Gravel, Sand And Silt
- Glaciofluvial Deposits - Sand And Gravel
- Glaciofluvial Ice Contact Deposits - Gravel, Sand And Silt
- Glaciofluvial Sheet Deposits - Gravel, Sand And Silt
- Glaciolacustrine Deposits - Clay, Silt And Sand
- Glaciolacustrine Deposits - Silt And Clay
- Hummocky (moundy) Glacial Deposits - Diamicton, Sand And Gravel
- Peat - Peat
- River Terrace Deposits - Sand And Gravel
- River Terrace Deposits, 1 - Sand And Gravel
- Superficial Deposits - Sediment
- Talus - Rock Fragments, Angular, Undifferentiated Source Rock
- Till, Devensian - Diamicton
- Bedrock at or Near Surface



Scale 1:20,000 @ A3

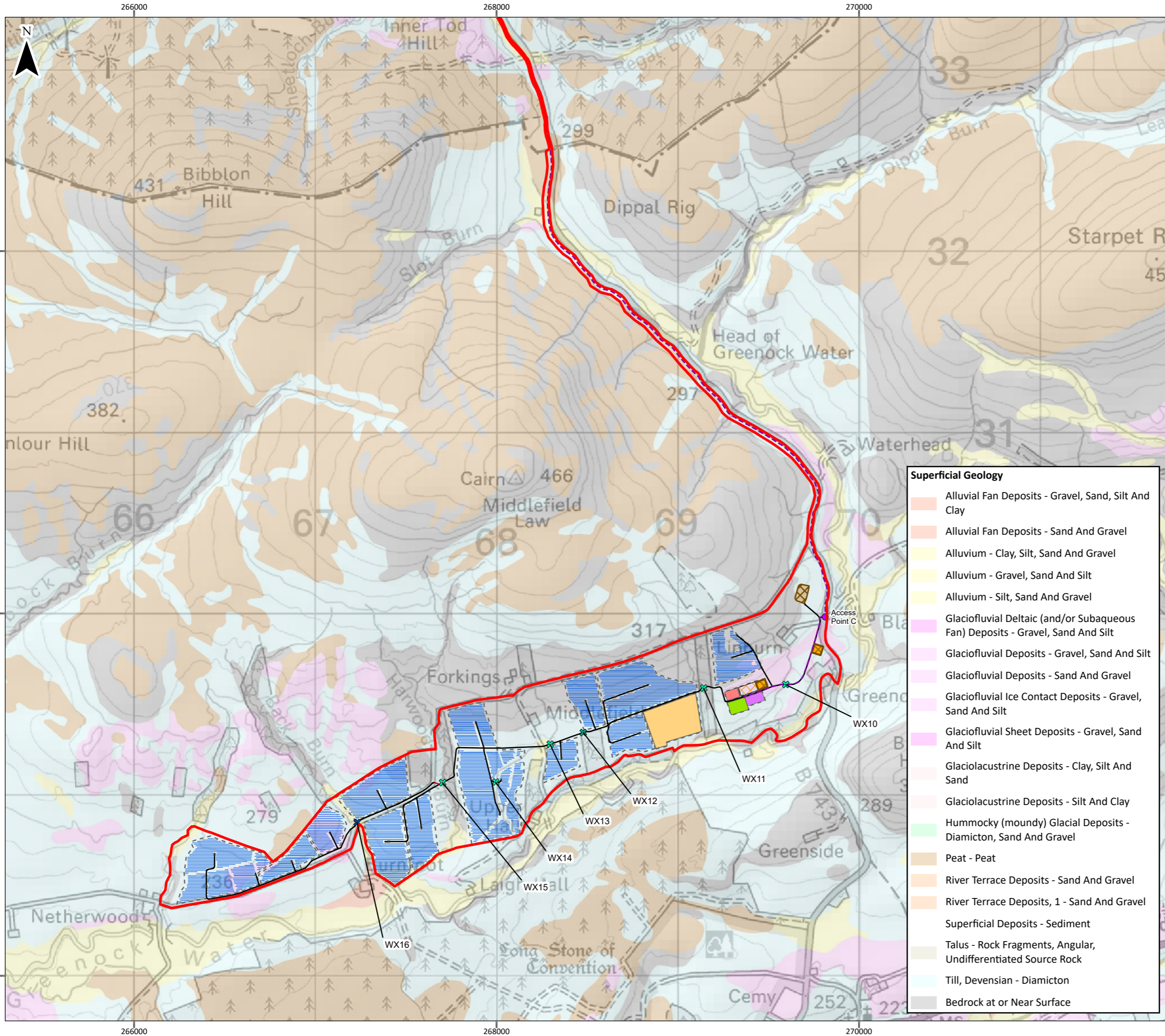
© Crown copyright and database rights 2025. Ordnance Survey AC0000808122  
 British National Grid Coordinate System  
 Superficial Geology data obtained via BGS WMS. British Geological Survey ©NERC.  
 All Rights Reserved [2025]



Hagshaw Energy Cluster - Western Expansion  
 Phase 1  
 EIA Report

**Figure 8.3b  
 Superficial Geology**





**Legend**

- Site Boundary
- Underground Electricity Export Cable(s)
- Solar PV Module
- Solar Inverter
- Long Duration Energy Storage
- Short Duration Energy Storage
- Proposed Development Substation
- SPEN Substation
- SPEN Temporary Compound
- Temporary Construction Compound
- Borrow Pit and Bund
- Security Fence
- Proposed Access Location

**Access Tracks**

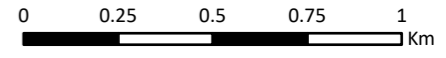
- Existing - Upgraded
- Cut

**Watercourse Crossing**

- ✕ New
- ✕ Existing - Upgraded
- ✕ Existing

**Superficial Geology**

- Alluvial Fan Deposits - Gravel, Sand, Silt And Clay
- Alluvial Fan Deposits - Sand And Gravel
- Alluvium - Clay, Silt, Sand And Gravel
- Alluvium - Gravel, Sand And Silt
- Alluvium - Silt, Sand And Gravel
- Glaciofluvial Deltaic (and/or Subaqueous Fan) Deposits - Gravel, Sand And Silt
- Glaciofluvial Deposits - Gravel, Sand And Silt
- Glaciofluvial Deposits - Sand And Gravel
- Glaciofluvial Ice Contact Deposits - Gravel, Sand And Silt
- Glaciofluvial Sheet Deposits - Gravel, Sand And Silt
- Glaciolacustrine Deposits - Clay, Silt And Sand
- Glaciolacustrine Deposits - Silt And Clay
- Hummocky (moundy) Glacial Deposits - Diamicton, Sand And Gravel
- Peat - Peat
- River Terrace Deposits - Sand And Gravel
- River Terrace Deposits, 1 - Sand And Gravel
- Superficial Deposits - Sediment
- Talus - Rock Fragments, Angular, Undifferentiated Source Rock
- Till, Devensian - Diamicton
- Bedrock at or Near Surface



Scale 1:20,000 @ A3

© Crown copyright and database rights 2025. Ordnance Survey AC0000808122  
 British National Grid Coordinate System  
 Superficial Geology data obtained via BGS WMS. British Geological Survey ©NERC.  
 All Rights Reserved [2025]



Hagshaw Energy Cluster - Western Expansion  
 Phase 1  
 EIA Report

**Figure 8.3c  
 Superficial Geology**