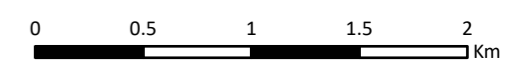


Legend

- ▬ Site Boundary
- ▬ Watercourse (OS OpenMap Local)
- ▬ Waterbody (OS OpenMap Local)
- Private Water Source (PWS) Type**
 - Borehole
 - Mains
 - Spring
 - Unconfirmed
- Private Water Source (PWS) 10 m Buffer
- Private Water Source (PWS) 100 m Buffer
- Private Water Source (PWS) 250 m Buffer
- Glengavel House
- Lough Plevland

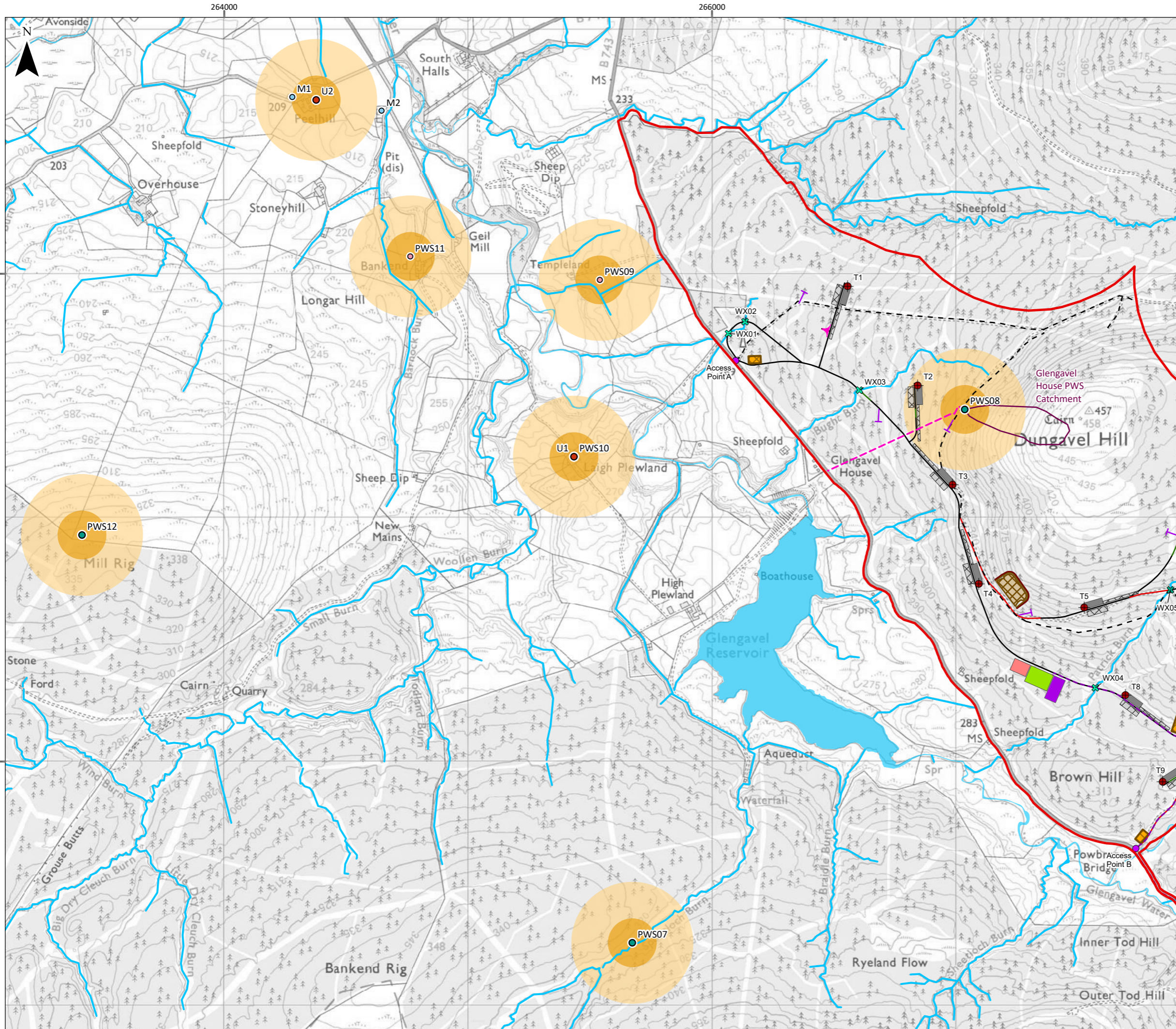


Scale 1:35,000 @ A3
 © Crown copyright and database rights 2025. Ordnance Survey AC0000808122
 British National Grid Coordinate System



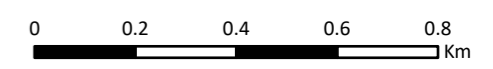
Hagshaw Energy Cluster - Western Expansion
 Phase 1
 EIA Report

TA 8.2 Figure 5a
Private Water Supply Assessment



Legend

- ▭ Site Boundary
 - Turbine Location (230m to tip)
 - Temporary Hardstand
 - Permanent Hardstand
 - Turning Heads
 - Underground Electricity Export Cable(s)
 - Proposed Development Substation
 - SPEN Substation
 - SPEN Temporary Compound & BESS
 - Temporary Construction Compound
 - Borrow Pit and Bund
 - Borrow Pit Surface Water Drain
 - Proposed Access Point
- Access Tracks**
- Existing - Upgraded
 - Floating
 - Cut
 - Existing Forest Road
 - Forestry Spur Road
- Watercourse Crossing**
- ✕ New
 - ✕ Existing - Upgraded
- Watercourse**
- Watercourse (OS OpenMap Local)
 - Waterbody (OS OpenMap Local)
- Private Water Source (PWS) Type**
- Borehole
 - Mains
 - Spring
 - Unconfirmed
 - Private Water Source (PWS) 10 m Buffer
 - Private Water Source (PWS) 100 m Buffer
 - Private Water Source (PWS) 250 m Buffer
 - Supply Pipework
- Private Water Supply (PWS) Catchment**
- Glengavel House



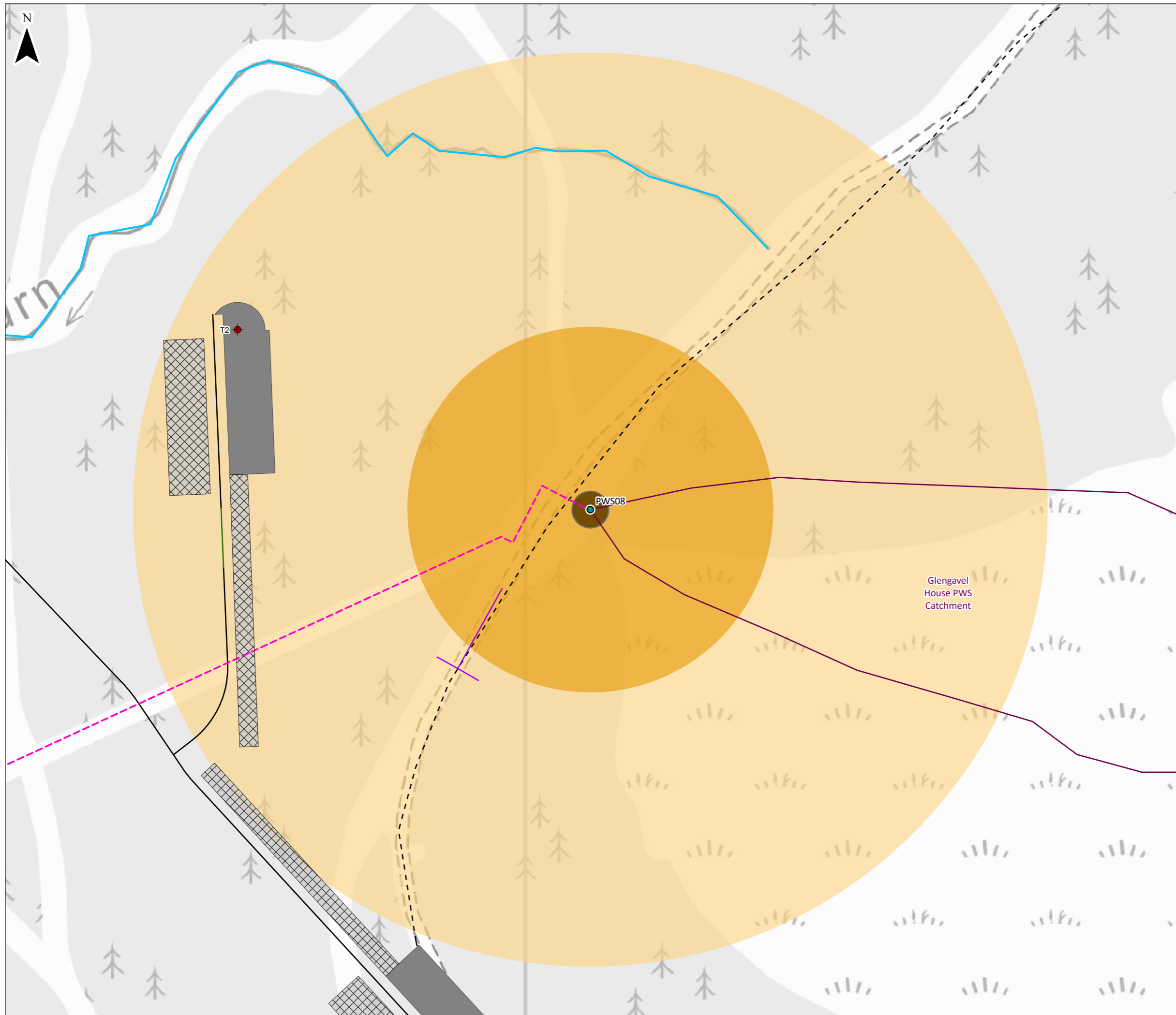
Scale 1:15,000 @ A3

© Crown copyright and database rights 2025. Ordnance Survey AC0000808122
British National Grid Coordinate System

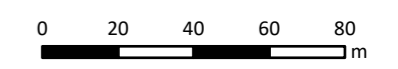


Hagshaw Energy Cluster - Western Expansion
Phase 1
EIA Report

TA 8.2 Figure 5b
Private Water Supply Assessment



- Legend**
- Site Boundary
 - Turbine Location (230m to tip)
 - Temporary Hardstand
 - Permanent Hardstand
 - Access Tracks**
 - Floating
 - Cut
 - Existing Forest Road
 - Forestry Spur Road
 - Watercourse (OS OpenMap Local)
 - Private Water Source (PWS) Type**
 - Spring
 - Private Water Source (PWS) 10 m Buffer
 - Private Water Source (PWS) 100 m Buffer
 - Private Water Source (PWS) 250 m Buffer
 - Supply Pipework
 - Private Water Supply (PWS) Catchment**
 - Glengavel House



Scale 1:2,000 @ A3

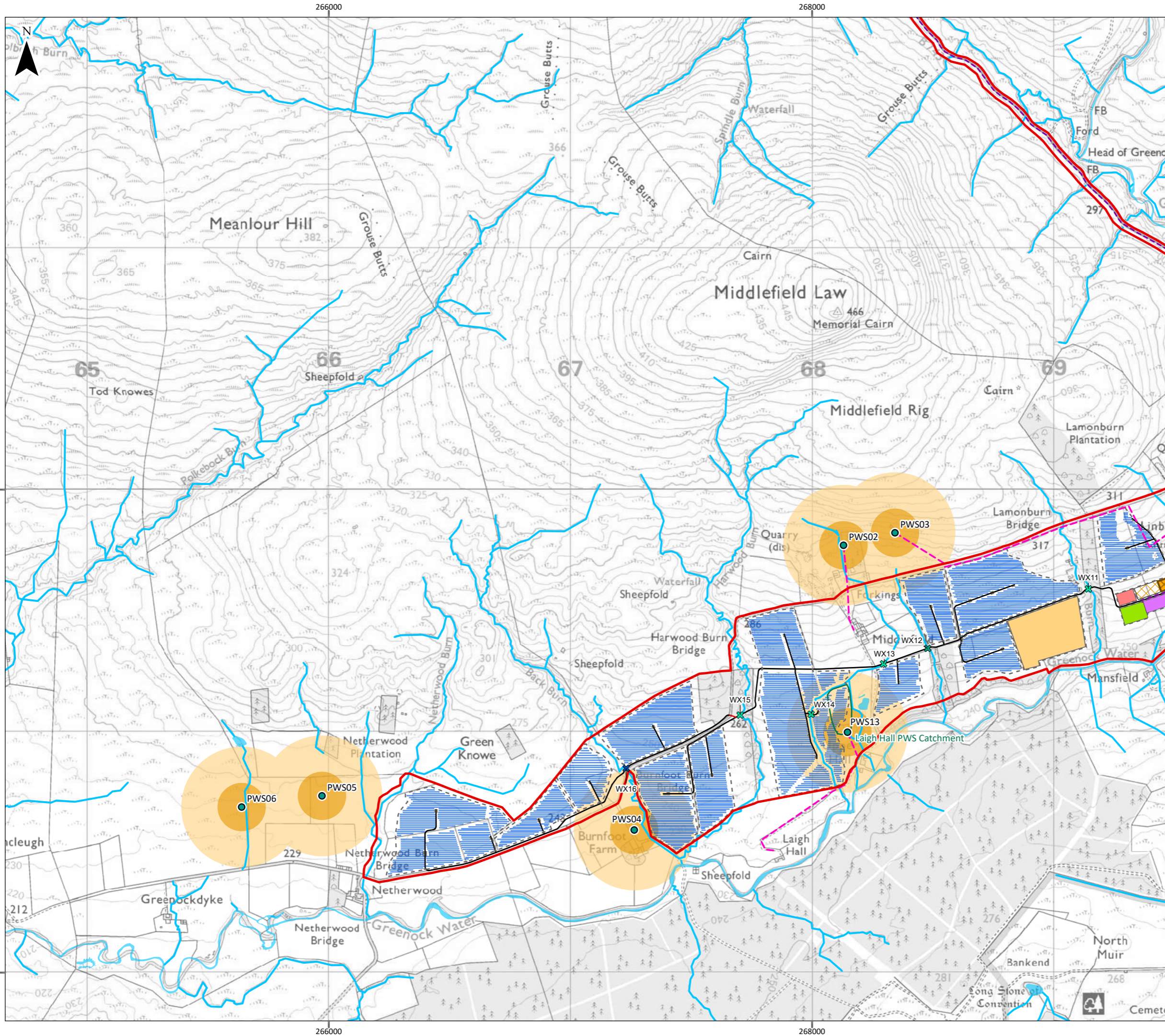
© Crown copyright and database rights 2025. Ordnance Survey AC0000808122
British National Grid Coordinate System



Hagshaw Energy Cluster - Western Expansion
Phase 1
EIA Report

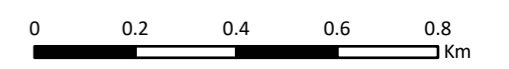
TA 8.2 Figure 5c
Private Water Supply Assessment

Date: 31/03/2025	Drawn by: DB	Checked by: JC	Version: V1
------------------	--------------	----------------	-------------



Legend

- ▬ Site Boundary
- - - Underground Electricity Export Cable(s)
- ▬ Solar PV Module
- ▬ Solar Inverter
- ▬ Long Duration Energy Storage
- ▬ Short Duration Energy Storage
- ▬ Proposed Development Substation
- ▬ SPEN Substation
- ▬ SPEN Temporary Compound
- ▬ Temporary Construction Compound
- - - Security Fence
- Access Tracks**
- ▬ Existing - Upgraded
- ▬ Cut
- Watercourse Crossing**
- ✕ New
- ✕ Existing - Upgraded
- ✕ Existing
- ▬ Watercourse (OS OpenMap Local)
- ▬ Waterbody (OS OpenMap Local)
- Private Water Source (PWS) Type**
- Spring
- ▭ Private Water Source (PWS) 10 m Buffer
- ▭ Private Water Source (PWS) 100 m Buffer
- ▭ Private Water Source (PWS) 250 m Buffer
- ▬ Supply Pipework
- Private Water Supply (PWS) Catchment**
- ▭ Laigh Hall



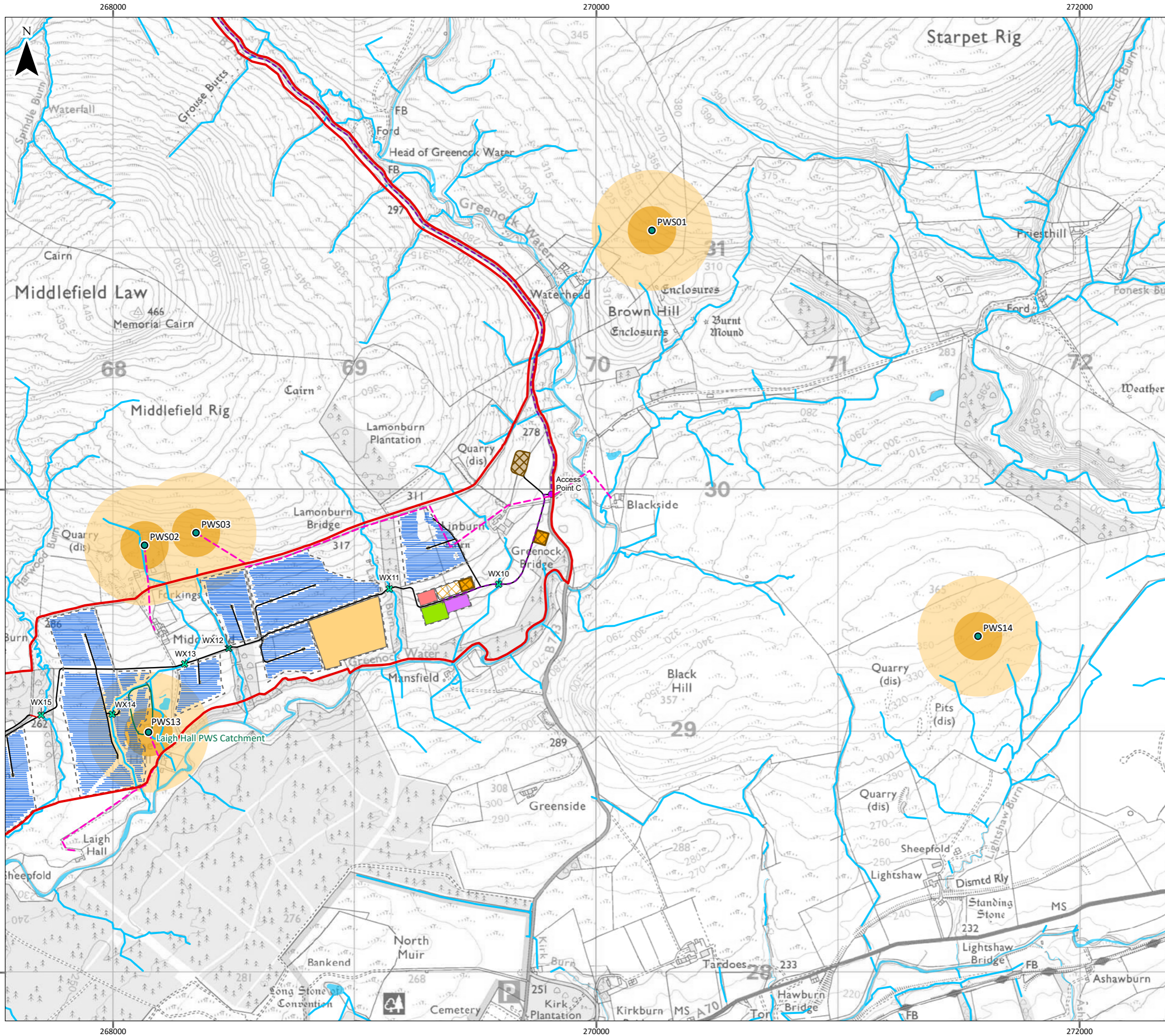
Scale 1:15,000 @ A3

© Crown copyright and database rights 2025. Ordnance Survey AC0000808122
British National Grid Coordinate System



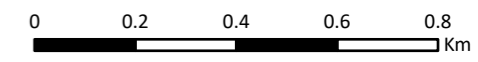
Hagshaw Energy Cluster - Western Expansion
Phase 1
EIA Report

**TA 8.2 Figure 5d
Private Water Supply Assessment**



Legend

- ▬ Site Boundary
- - - Underground Electricity Export Cable(s)
- Solar PV Module
- Solar Inverter
- Long Duration Energy Storage
- Short Duration Energy Storage
- Proposed Development Substation
- SPEN Substation
- SPEN Temporary Compound
- Temporary Construction Compound
- Borrow Pit and Bund
- - - Security Fence
- Proposed Access Point
- Access Tracks**
- ▬ Existing - Upgraded
- ▬ Cut
- Watercourse Crossing**
- ✕ New
- ✕ Existing - Upgraded
- ▬ Watercourse (OS OpenMap Local)
- ▬ Waterbody (OS OpenMap Local)
- Private Water Source (PWS) Type**
- Spring
- Private Water Source (PWS) 10 m Buffer
- Private Water Source (PWS) 100 m Buffer
- Private Water Source (PWS) 250 m Buffer
- ▬ Supply Pipework
- Private Water Supply (PWS) Catchment**
- Laigh Hall



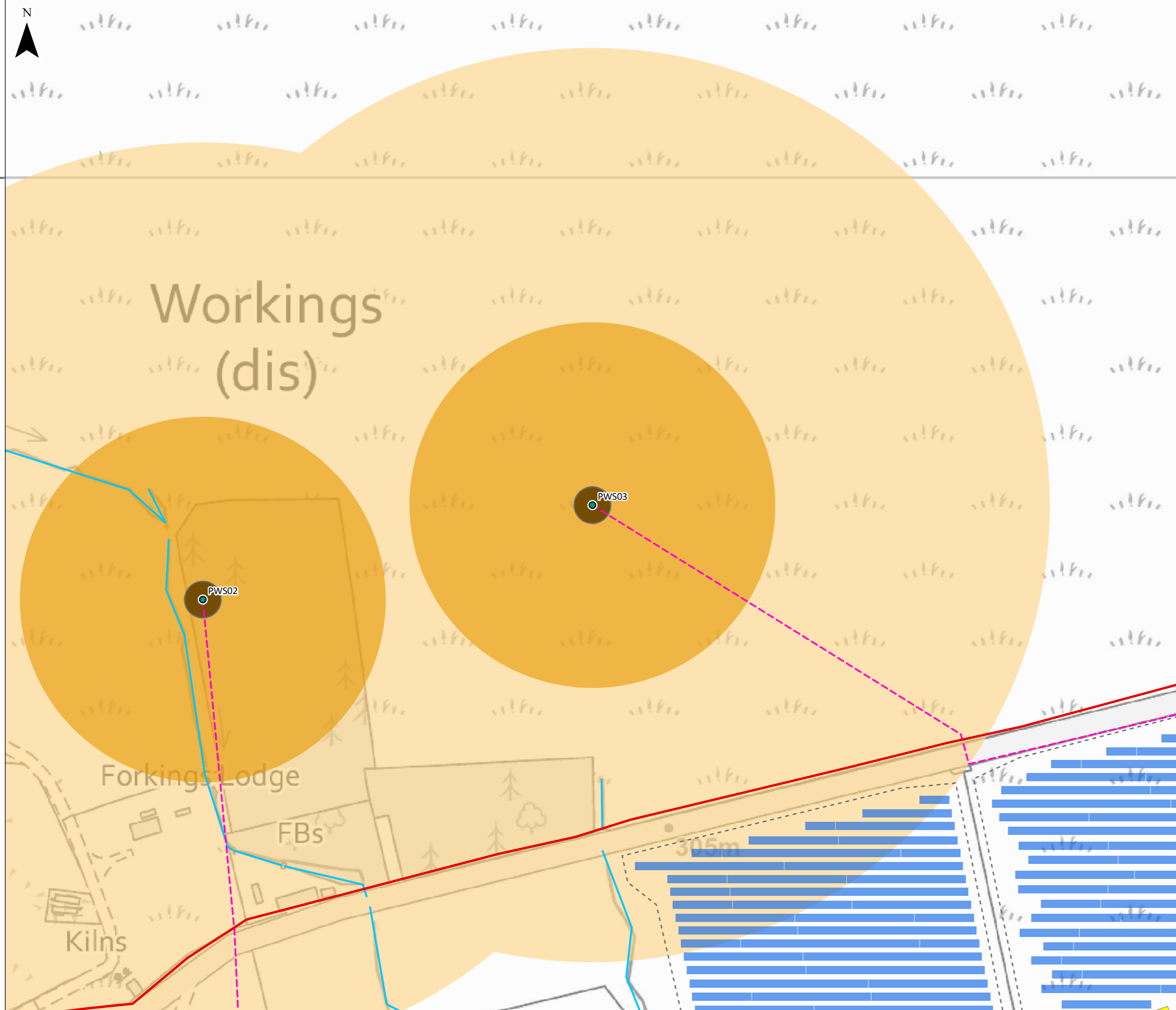
Scale 1:15,000 @ A3

© Crown copyright and database rights 2025. Ordnance Survey AC0000808122
British National Grid Coordinate System



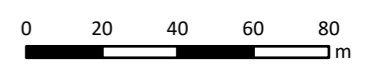
Hagshaw Energy Cluster - Western Expansion
Phase 1
EIA Report

**TA 8.2 Figure 5e
Private Water Supply Assessment**



630000

- Legend**
- Site Boundary
 - Solar PV Module
 - Solar Inverter
 - Security Fence
 - Watercourse (OS OpenMap Local)
- Private Water Source (PWS) Type**
- Spring
 - Private Water Source (PWS) 10 m Buffer
 - Private Water Source (PWS) 100 m Buffer
 - Private Water Source (PWS) 250 m Buffer
 - Supply Pipework



Scale 1:2,000 @ A3

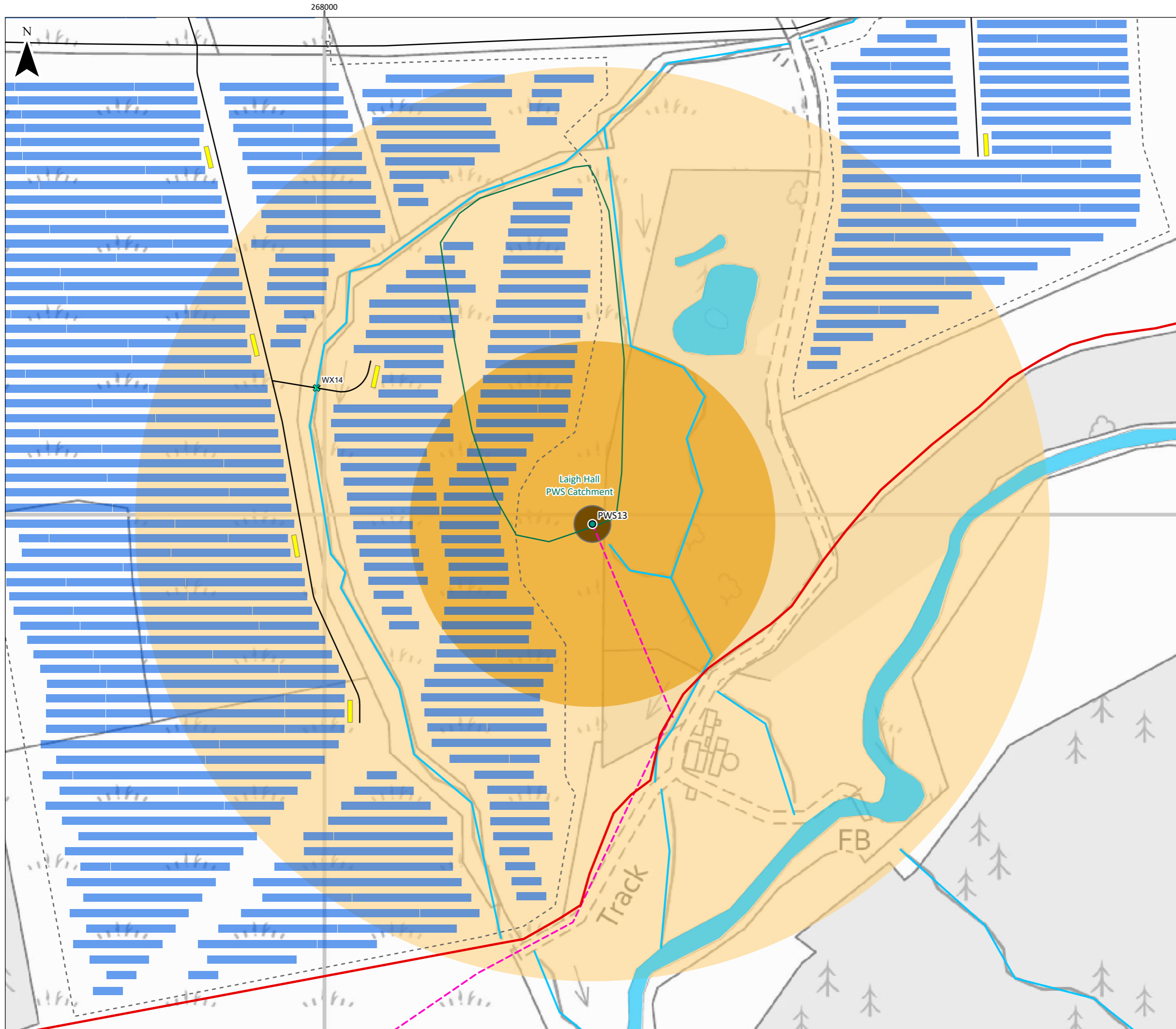
© Crown copyright and database rights 2025. Ordnance Survey AC0000808122
British National Grid Coordinate System



Hagshaw Energy Cluster - Western Expansion
Phase 1
EIA Report

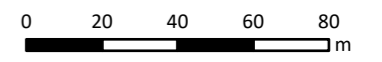
TA 8.2 Figure 5f
Private Water Supply Assessment

Date: 31/03/2025	Drawn by: DB	Checked by: JC	Version: V1
------------------	--------------	----------------	-------------



Legend

- Site Boundary
- Solar PV Module
- Solar Inverter
- Security Fence
- Access Tracks**
- Cut
- Watercourse Crossing**
- New
- Watercourse (OS OpenMap Local)
- Waterbody (OS OpenMap Local)
- Private Water Source (PWS) Type**
- Spring
- Private Water Source (PWS) 10 m Buffer
- Private Water Source (PWS) 100 m Buffer
- Private Water Source (PWS) 250 m Buffer
- Supply Pipework
- Private Water Supply (PWS) Catchment**
- Laigh Hall



Scale 1:2,000 @ A3

© Crown copyright and database rights 2025. Ordnance Survey AC0000808122
British National Grid Coordinate System



Hagshaw Energy Cluster - Western Expansion
Phase 1
EIA Report

**TA 8.2 Figure 5g
Private Water Supply Assessment**

Date:	31/03/2025	Drawn by:	DB	Checked by:	JC	Version:	V1
-------	------------	-----------	----	-------------	----	----------	----