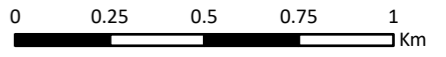


**Legend**

- Site Boundary
  - + Turbine Location (200m to tip)
  - Turbine Location (230m to tip)
  - Temporary Hardstand
  - Permanent Hardstand
  - Turning Heads
  - Underground Electricity Export Cable(s)
  - Proposed Development Substation
  - SPEN Substation
  - SPEN Temporary Compound & BESS
  - Temporary Construction Compound
  - Borrow Pit and Bund
  - Borrow Pit Surface Water Drain
  - Proposed Access Location
- Access Tracks**
- Existing - Upgraded
  - Floating
  - Cut
  - Existing Forest Road
  - Forestry Spur Road

**Note:**  
Bedrock Geology Legend shown in TA 8.5 Figure 4d.



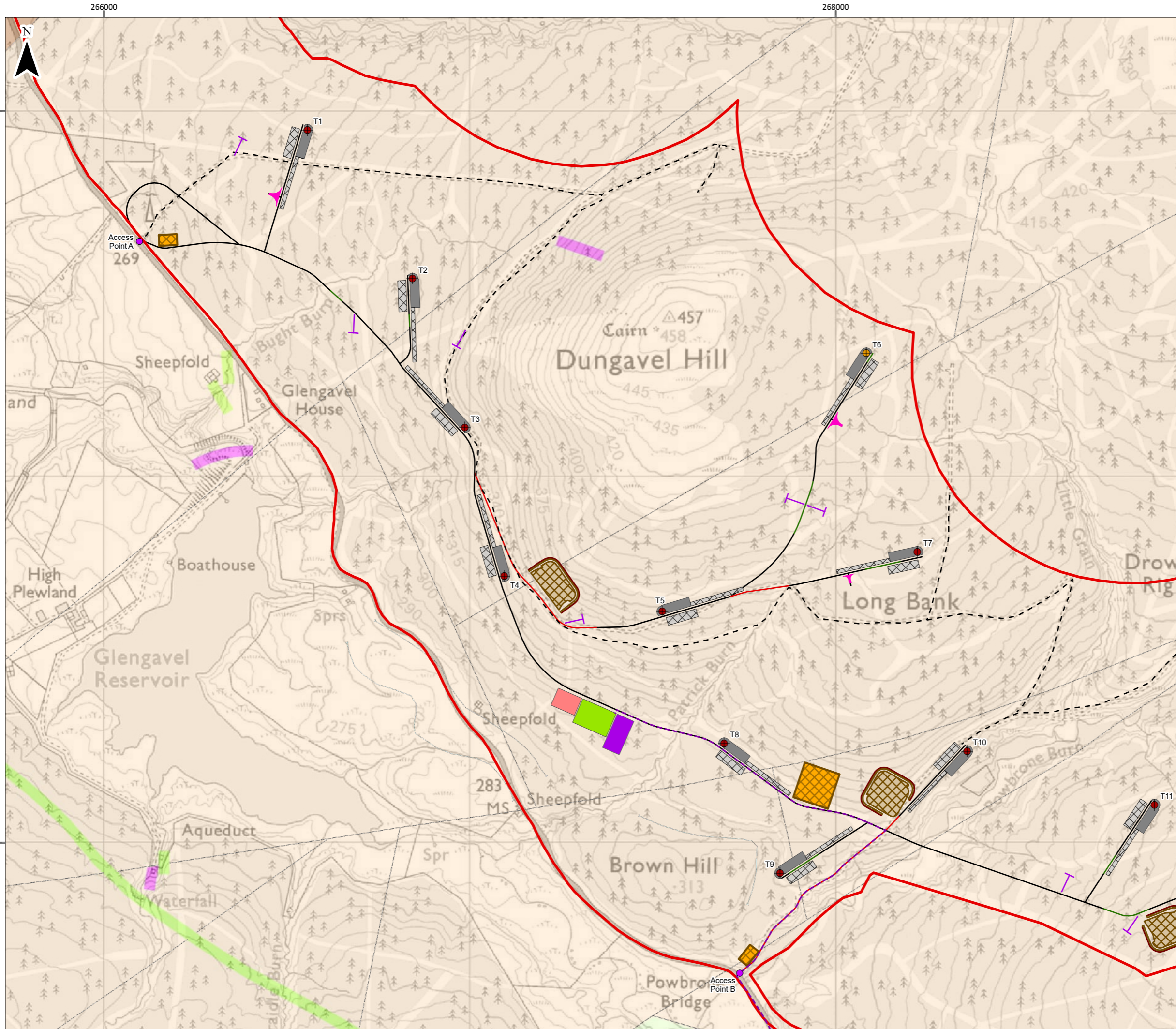
Scale 1:20,000 @ A3

© Crown copyright and database rights 2025. Ordnance Survey AC0000808122  
British National Grid Coordinate System  
Bedrock Geology data obtained via BGS WMS. British Geological Survey ©NERC.  
All Rights Reserved [2025]



Hagshaw Energy Cluster - Western Expansion  
Phase 1  
EIA Report

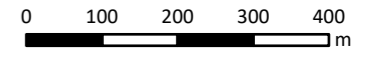
**TA 8.5 Figure 4a  
Bedrock Geology**



**Legend**

- Site Boundary
  - ⊕ Turbine Location (200m to tip)
  - ⊕ Turbine Location (230m to tip)
  - Temporary Hardstand
  - Permanent Hardstand
  - Turning Heads
  - Underground Electricity Export Cable(s)
  - Proposed Development Substation
  - SPEN Substation
  - SPEN Temporary Compound & BESS
  - Temporary Construction Compound
  - Borrow Pit and Bund
  - Borrow Pit Surface Water Drain
  - Proposed Access Location
- Access Tracks**
- Existing - Upgraded
  - Floating
  - Cut
  - Existing Forest Road
  - Forestry Spur Road

**Note:**  
Bedrock Geology Legend shown in TA 8.5 Figure 4d.



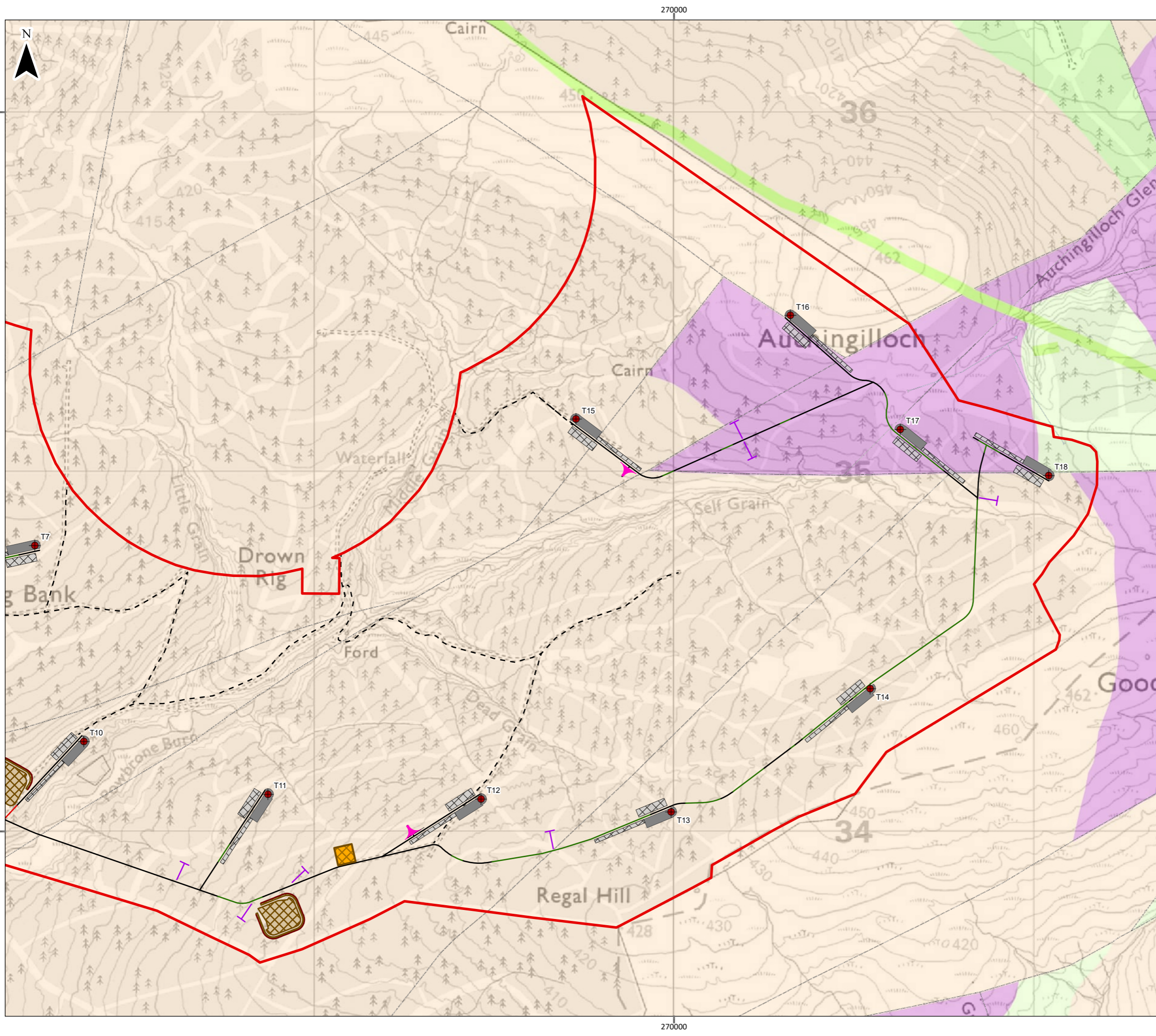
Scale 1:10,000 @ A3

© Crown copyright and database rights 2025. Ordnance Survey AC0000808122  
British National Grid Coordinate System  
Bedrock Geology data obtained via BGS WMS. British Geological Survey ©NERC.  
All Rights Reserved [2025]



Hagshaw Energy Cluster - Western Expansion  
Phase 1  
EIA Report

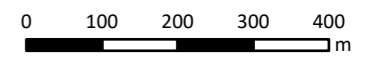
**TA 8.5 Figure 4b  
Bedrock Geology**



**Legend**

- Site Boundary
  - Turbine Location (230m to tip)
  - Temporary Hardstand
  - Permanent Hardstand
  - Turning Heads
  - Temporary Construction Compound
  - Borrow Pit and Bund
  - Borrow Pit Surface Water Drain
- Access Tracks**
- Existing - Upgraded
  - Floating
  - Cut
  - Existing Forest Road
  - Forestry Spur Road

**Note:**  
Bedrock Geology Legend shown in TA 8.5 Figure 4d.



Scale 1:10,000 @ A3

© Crown copyright and database rights 2025. Ordnance Survey AC0000808122  
British National Grid Coordinate System  
Bedrock Geology data obtained via BGS WMS. British Geological Survey ©NERC.  
All Rights Reserved [2025]



Hagshaw Energy Cluster - Western Expansion  
Phase 1  
EIA Report

**TA 8.5 Figure 4c  
Bedrock Geology**




**Bedrock Geology**

*Bedrock Geology*

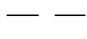
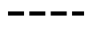
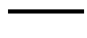
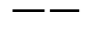


-  Swanshaw Sandstone Formation - Sandstone
-  Birkenhead Sandstone Formation - Sandstone
-  Dippal Burn Formation - Sandstone, Siltstone And Mudstone
-  Leaze Formation - Sandstone
-  Logan Formation - Sandstone, Siltstone And Mudstone
-  Middlefield Conglomerate Formation - Conglomerate
-  Monument Formation - Sandstone
-  Plewland Sandstone Formation - Sandstone
-  Slot Burn Formation - Mudstone, Siltstone And Sandstone
-  Waterhead Group (cf Glenbuck Group) - Conglomerate, Sandstone And Siltstone

Silurian / Devonian  
 Silurian  
 Palaeogene  
 Unknown  
 Silurian / Devonian

*Igneous Rocks*

-  Unnamed Igneous Intrusion Of Unknown Age - Mafite
-  Mull Dyke-swarm - Microgabbro
-  South Of Scotland Granitic Suite - Microdioritic-rock

**Linear Geology**

-  Axial Plane Trace of Major Anticline
-  Coal Seam, Inferred
-  Coal Seam, Observed
-  Fault, Inferred, Displacement Unknown
-  Glacial Overflow Channel Centre Line
-  Mineral Vein, Inferred

Bedrock Geology data obtained via BGS WMS. British Geological Survey ©NERC. All Rights Reserved [2025]



Hagshaw Energy Cluster - Western Expansion  
Phase 1  
EIA Report

**TA 8.5 Figure 4d  
Bedrock Geology Legend**