

266000

268000

270000



636000

634000

632000

266000

268000

270000

Legend

- Site Boundary
 - ⊕ Turbine Location (200m to tip)
 - ⊕ Turbine Location (230m to tip)
 - Temporary Hardstand
 - Permanent Hardstand
 - Turning Heads
 - Underground Electricity Export Cable(s)
 - Proposed Development Substation
 - SPEN Substation
 - SPEN Temporary Compound & BESS
 - Temporary Construction Compound
 - Borrow Pit and Bund
 - Borrow Pit Surface Water Drain
- Access Tracks**
- Existing - Upgraded
 - Floating
 - Cut
 - Proposed Access Point
 - Existing Forest Road
 - Forestry Spur Road
 - Watercourse (OS OpenMap Local)
 - Waterbody (OS OpenMap Local)
- Geomorphology**
- Break in Slope
 - Deep Peat Area

TA 8.5 Figure 6b

TA 8.5 Figure 6c

Access Point A

Access Point B

T1

T2

T3

T4

T5

T8

T9

T10

T11

T12

T13

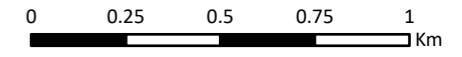
T14

T15

T16

T17

T18



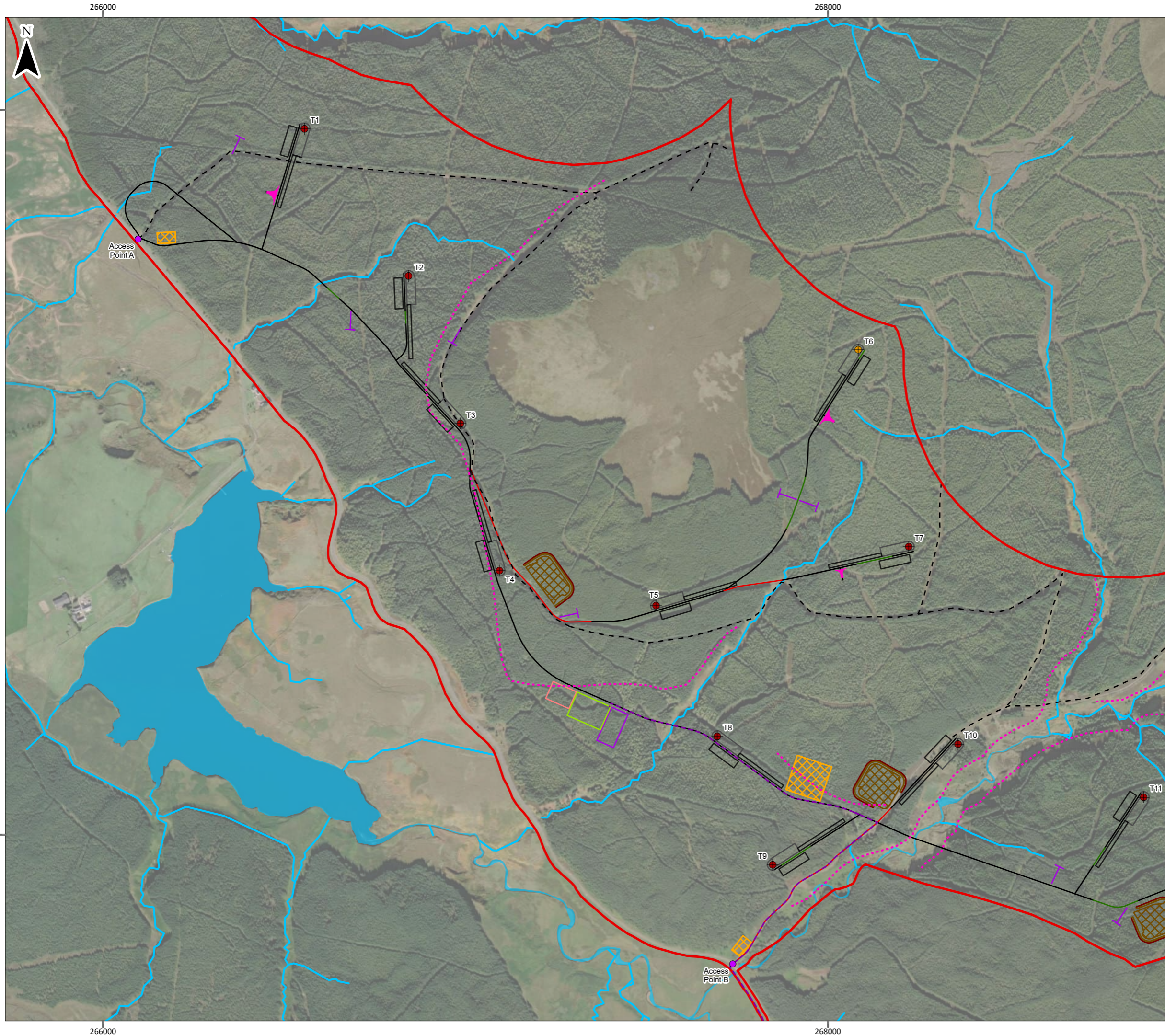
Scale 1:20,000 @ A3

© Crown copyright and database rights 2025. Ordnance Survey AC0000808122
Aerial Imagery (2021) Source: Maxar, Microsoft, Map data © OpenStreetMap contributors, Microsoft, Facebook, Inc. and its affiliates, Esri Community Maps contributors, Map layer by Esri. British National Grid Coordinate System



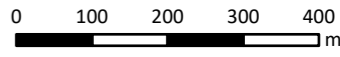
Hagshaw Energy Cluster - Western Expansion
Phase 1
EIA Report

TA 8.5 Figure 6a
Geomorphological Features



Legend

- Site Boundary
 - ◆ Turbine Location (200m to tip)
 - ◆ Turbine Location (230m to tip)
 - Temporary Hardstand
 - Permanent Hardstand
 - Turning Heads
 - Underground Electricity Export Cable(s)
 - Proposed Development Substation
 - SPEN Substation
 - SPEN Temporary Compound & BESS
 - Temporary Construction Compound
 - Borrow Pit and Bund
 - Borrow Pit Surface Water Drain
- Access Tracks**
- Existing - Upgraded
 - Floating
 - Cut
 - Proposed Access Point
 - Existing Forest Road
 - Forestry Spur Road
 - Watercourse (OS OpenMap Local)
 - Waterbody (OS OpenMap Local)
- Geomorphology**
- Break in Slope



Scale 1:10,000 @ A3

© Crown copyright and database rights 2025. Ordnance Survey AC0000808122
 Aerial Imagery (2021) Source: Maxar, Microsoft, Map data © OpenStreetMap contributors, Microsoft, Facebook, Inc. and its affiliates, Esri Community Maps contributors, Map layer by Esri. British National Grid Coordinate System



Hagshaw Energy Cluster - Western Expansion
 Phase 1
 EIA Report

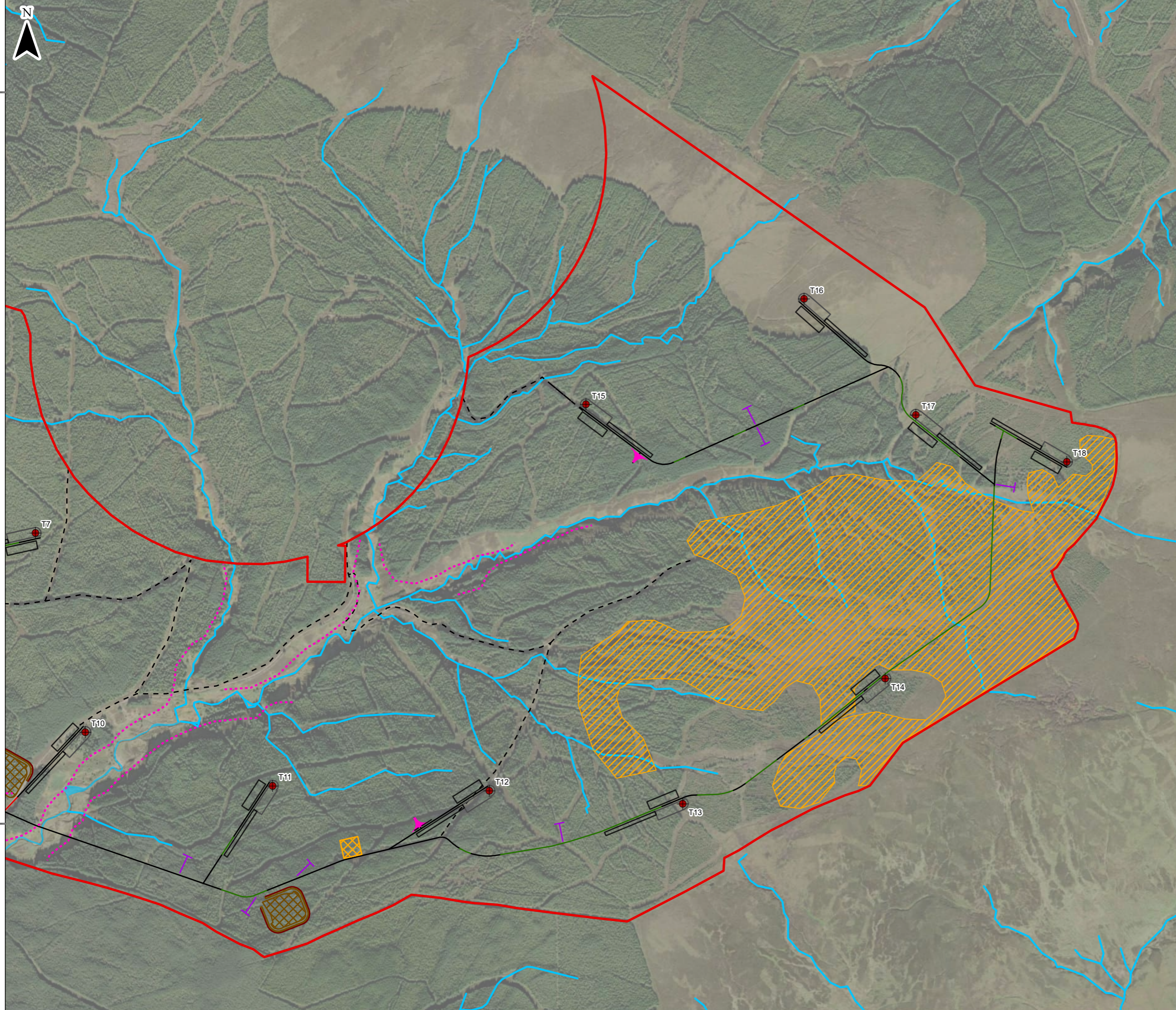
**TA 8.5 Figure 6b
 Geomorphological Features**

270000

636000

634000

270000



Legend

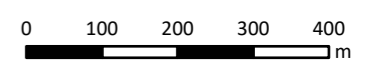
- Site Boundary
- ◆ Turbine Location (230m to tip)
- Temporary Hardstand
- Permanent Hardstand
- Turning Heads
- Temporary Construction Compound
- Borrow Pit and Bund
- Borrow Pit Surface Water Drain

Access Tracks

- Existing - Upgraded
- Floating
- Cut
- Existing Forest Road
- Forestry Spur Road
- Watercourse (OS OpenMap Local)
- Waterbody (OS OpenMap Local)

Geomorphology

- Break in Slope
- Deep Peat Area



Scale 1:10,000 @ A3

© Crown copyright and database rights 2025. Ordnance Survey AC0000808122
 Aerial Imagery (2021) Source: Maxar, Microsoft, Map data © OpenStreetMap contributors, Microsoft, Facebook, Inc. and its affiliates, Esri Community Maps contributors, Map layer by Esri. British National Grid Coordinate System



Hagshaw Energy Cluster - Western Expansion
 Phase 1
 EIA Report

**TA 8.5 Figure 6c
 Geomorphological Features**

Date: 20/03/2025	Drawn by: DB	Checked by: JC	Version: V1
------------------	--------------	----------------	-------------