

Technical Appendix 9.3

Noise Survey Records

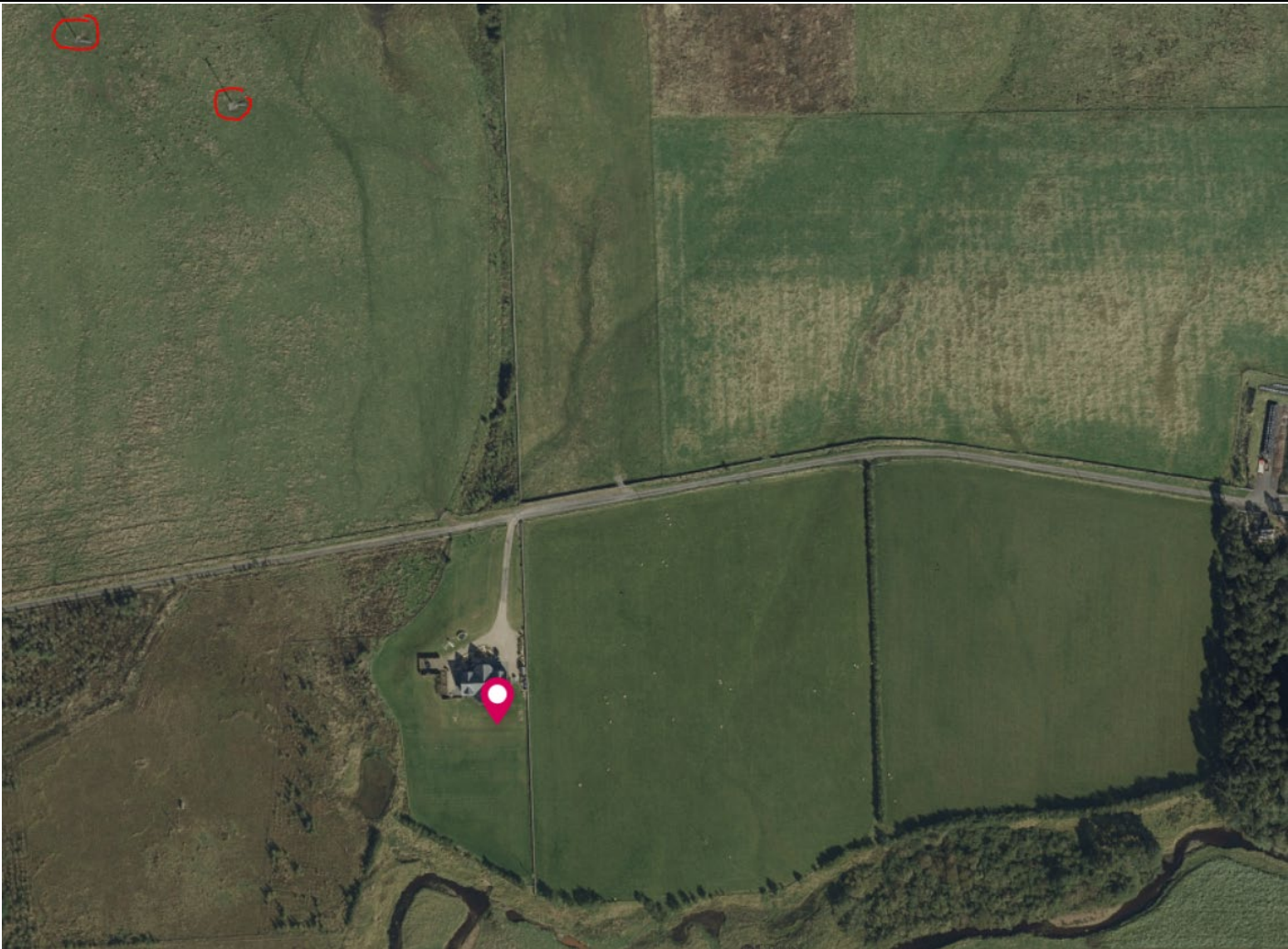
This page is intentionally blank.

NOISE SURVEY RECORD SHEET



Project Title: Hagshaw Energy Cluster – Western Expansion		Project Number: 4188	
Monitoring Location No.	NMP1 – Bibblon Lodge	Time & Date (start of measurement):	11/11/2022 – 11:40 SLM restarted on 23/11/2022
GPS Coordinates:	NS 65654, 28330	Time & Date (end of measurement):	13/12/2022 – 11:10
Calibration check (pre-measurement):	94.0	Calibration check (post-measurement):	94.0
Weather conditions (at commissioning)			
Wind (light/med/strong/km/h):	Moderate to strong	Temperature (°C):	13
Rain:	Dry	Cloud (% cover):	100
Ambient Noise Environment			
Dominant noise source(s):	Low level running water noise from distant watercourse		
Other audible noise sources: Tonality, frequency of occurrence, description of noise (e.g. drone/whistle/hum/banging)	Boiler flue at least 30m from monitoring location and from the eastern wall of the property, with no line of sight to NMP		
	Boiler noted to be operating but was inaudible at the monitoring location.		
	Two small turbines present to north of the property. These were audible to the front of the property (up-wind) in very windy conditions but not audible to the south of the property at the monitoring location.		
	SLM S/N: 00610205		





Installed monitoring location and locations of existing small turbines circled in red

--

NOISE SURVEY RECORD SHEET



Project Title: Hagshaw Energy Cluster – Western Expansion		P	Project Number: 4188
Monitoring Location No.	NMP2 – Blackside	Time & Date (start of measurement):	11/12/2022 – 12:20
GPS Coordinates:	NS 70115, 29901	Time & Date (end of measurement):	13/12/2022 – 10:50
Calibration check (pre-measurement):	94.0	Calibration check (post-measurement):	94.0
Weather conditions (at commissioning)			
Wind (light/med/strong/km/h):	Moderate	Temperature (°C):	12
Rain:	Dry	Cloud (% cover):	75
Ambient Noise Environment			
Dominant noise source(s):	Wind-blown vegetation, including trees surrounding property		
Other audible noise sources: Tonality, frequency of occurrence, description of noise (e.g. drone/whistle/hum/banging)	Within yard/garden area, wind-induced rustling of flags and a polytunnel was audible. SLM set up at edge of field adjacent to driveway of property where rustling was not audible.		
	Watercourse inaudible at NMP during installation. On return visit to change batteries the watercourse was just audible at the monitoring location in low wind/still conditions, however, measured level was in the range 20 – 25 dB, i.e. substantially below fixed minimum limit.		
	Road traffic noise was more prominent under still/low wind conditions.		
	SLM S/N: 00420711		



